

INSTALLATION INSTRUCTION

ITEM NO.:DL-TRI-SPBAR

DESCRIPTION: 3" ROLL BAR (FLAT BASE W/ LIGHT) FOR TRITON 15+

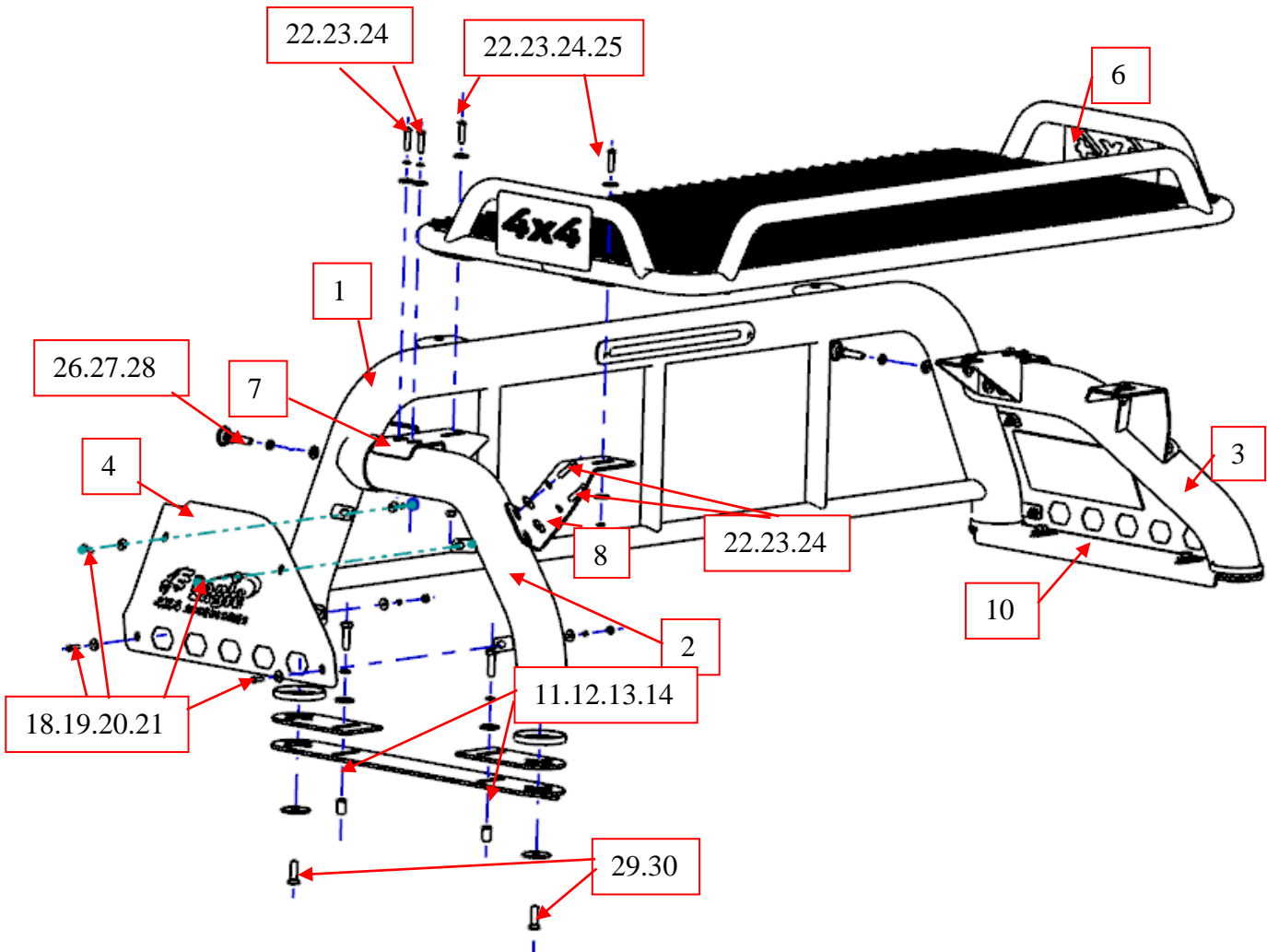
ATTENTION:

- Please read this installation menu before installing this part. Protect your car properly in case there is any scratch might have.
- You may need to periodically to re-tighten all hardware for safety use after installation.
- Installation pictures are only for your reference, there might be some differences between pictures and real parts but no affect for your fitting.

PART LIST

NO.	NAME	QTY	REMARK	NO.	NAME	QTY	REMARK
1	Front bar	1		16	Allen key	1	S=5
2	Side bar (L)	1		17	Allen key	1	S=6
3	Side bar (R)	1		18	Hex socket head screws	8	M6x20
4	SIDE PLATE (L)	1		19	FLAT Washer	16	Φ6*18*1.5
5	SIDE PLATE (R)	1		20	Spring Washer	8	Φ6
6	ROOF RACK	1		21	Hex nut	8	M6
7	CONNECTOR 1	2		22	Hex socket head screws	16	M8x30
8	CONNECTOR 2 (L)	1		23	FLAT Washer	20	Φ8*25*2.0
9	CONNECTOR 2 (R)	1		24	Spring Washer	16	Φ8
10	BASE	2		25	Hex nut	4	M8
11	HEX BOLT	4	M10x35	26	Hex socket head screws	2	M10x40
12	FLAT Washer	4	φ 10*30*2.5	27	Large Washer	2	Φ 10*20*2.0
13	Spring Washer	4	Φ10	28	Spring Washer	2	Φ10
14	Flat rivet nut	4	M10	29	Large Washer	4	Φ 14*45*3.0
15	Allen key	1	S=4	30	Hex countersunk head screws	4	M10x35

INSTALLATION PICTURE

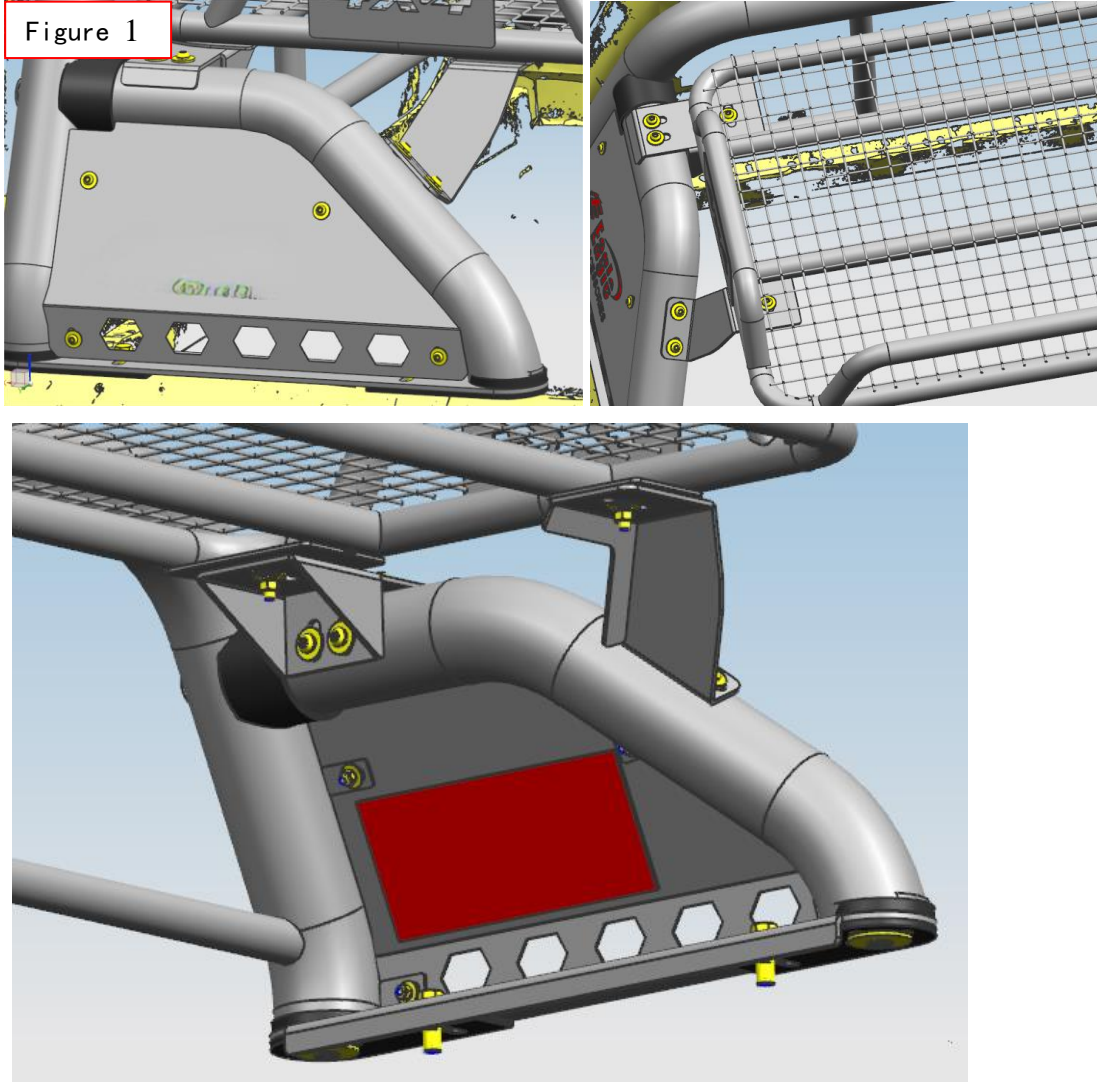


INSTALLATION PROCEDURE

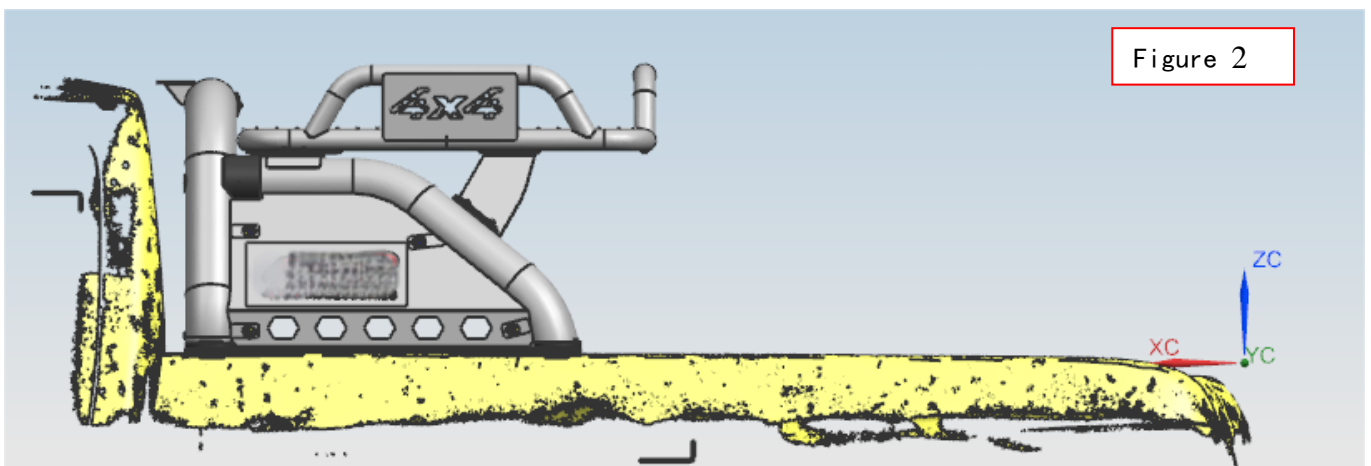
Step 1: Refer to Part List to check if all hard ware are included.

Step 2: As shown in Figure , using the different fastener install the side front bar ,side bar and side plate, and then install the front bar and side bar one the base, tighten with Hex countersunk head screws M10*35,Then the installation is complete.

Step 3:Check whether all fasteners are aligned, and then tighten each fastener, as shown in Figure 1.



The final effect of the installation is as shown in Figure 2.



Disclaimer: Caused due to improper installation initiates or some related problem and losses, are beyond our company' s quality assurance.