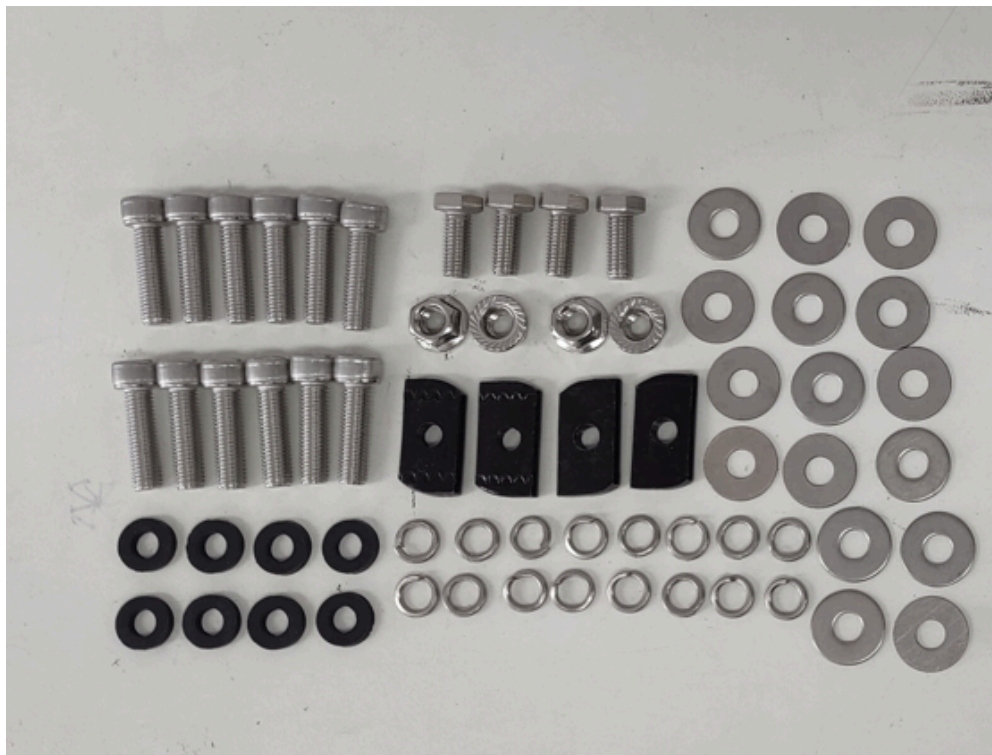
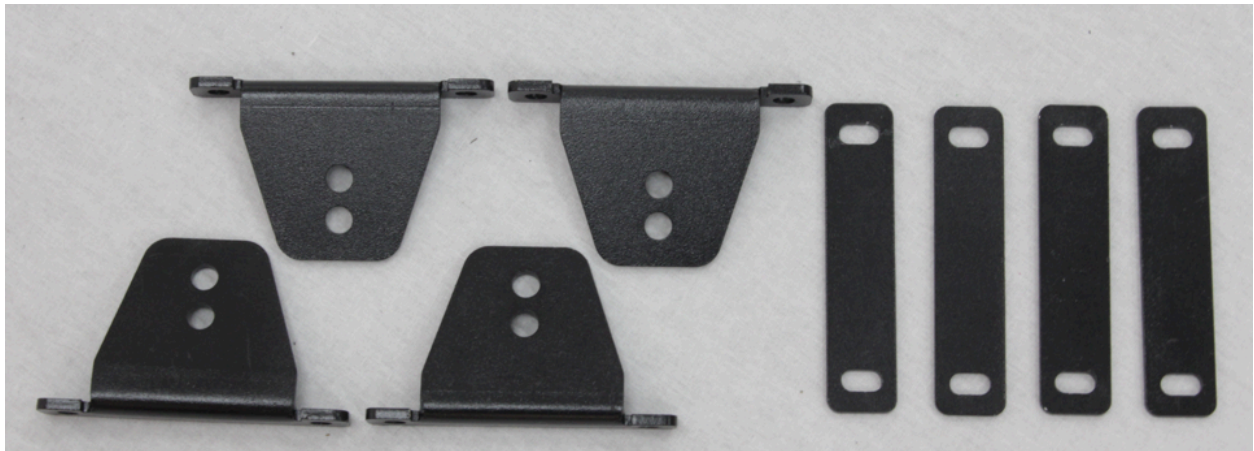
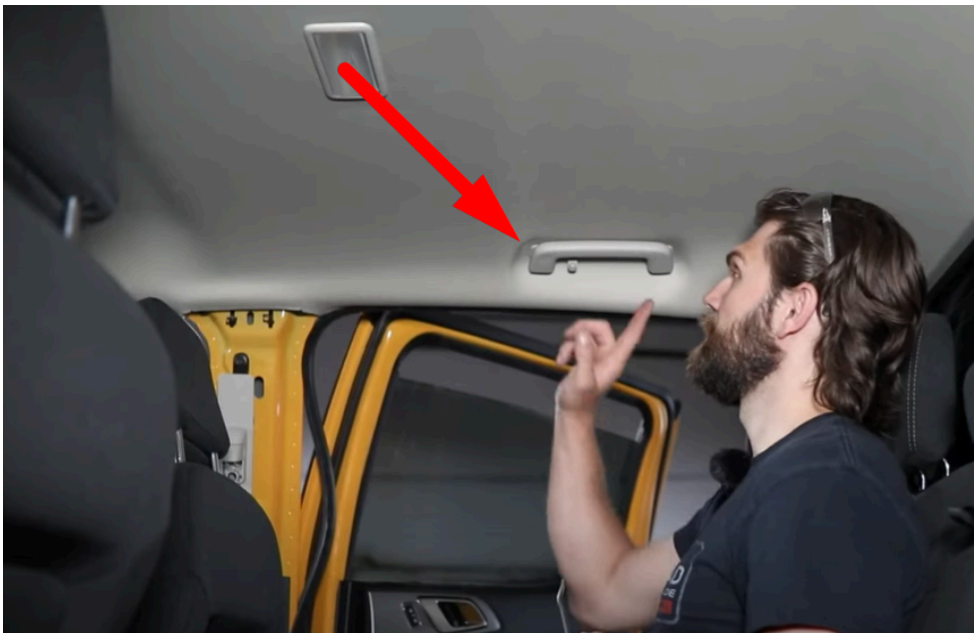


How to install a roof rack by drilling into the roof

Note: The following are simple instructions on how to install the rack by drilling holes to line up. This should be done professionally by an experienced fitter. The instructions are only made as a demo for installers to use as a guide. If you need a more thorough video please contact our support team



Remove roof lining. All models will have a slightly different way to remove the roof lining



Beware of drilling into the airbags when drilling roof holes



Remove the rubbers/ plastics from your roof



Assemble the roof rack with the backbone and small brackets then ask someone to help you place it on the roof so you know exactly where you want to install it. Once lined up mark out where you will drill (away from the airbags)

Remove the rack then drill the holes



Ensure you add silicone before placing the small brackets



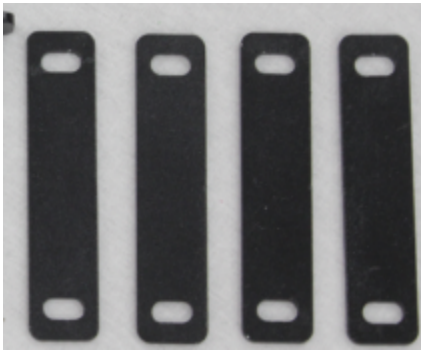


Remove the small bracket from the platform then install it to the roof using the allen key screw, bolt and small plate from inside shown in the next 3 images





The plates can look like the above or bottom image (placed from under)



Add the backbone to the small brackets secured to the car roof using the supplied alen key screws



Add the channel nuts with the nut screw to the long backbone



Use the bolt screw with the channel nut to secure the platform to the backbone

