

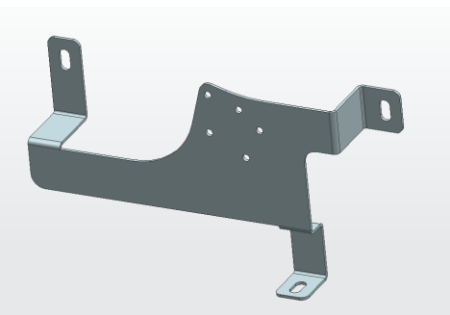
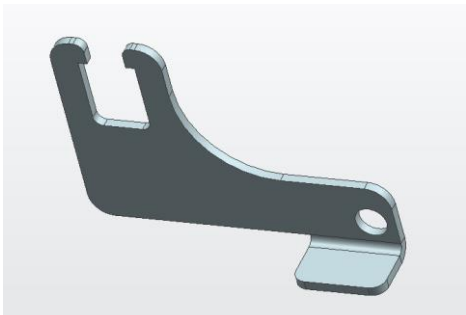
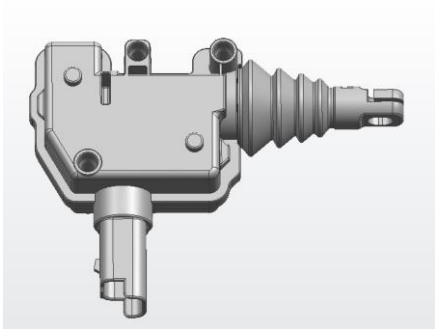


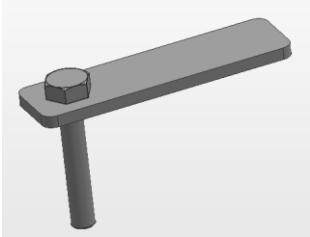


Tailgate Central Locking Kit For Nissan Navara NP300 2014-2020

Instruction

CAUTION:




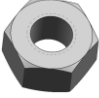
1. The figures here are for reference only and may have differences with the actual product you received, however they share the same assembly way.
2. Please read the instruction completely for easy installation, which will also help you to avoid scratches or other potential damages to your appealing car.

PART LIST:

NO.	QTY	NAME	NO.	QTY	NAME
①	1	 Bracket	②	1	 Lock Catch
③	1	 Actuator	④	1	 Wire Harness (Universal)
⑤	2	 T-Shaped clamp (Wire 0.2-0.5)	⑥	1	 T shape bolt M6 (35x65x18)
⑦	1		⑧	1	

Item NO: PW036809

Name: Tailgate Central Locking Kit For Nissan Navara NP300 14-20

		M6 Spring Washer			M6 Flat Washer (6x18x1.6)
⑨	1	 Hexagon Socket Button Head Screws M6_20	⑩	1	 Hex flange nut M6
⑪	3	 Phillip tapping screw ST4.8_16	⑫	1	 Hex nut M6

STEP ONE: Bracket installation

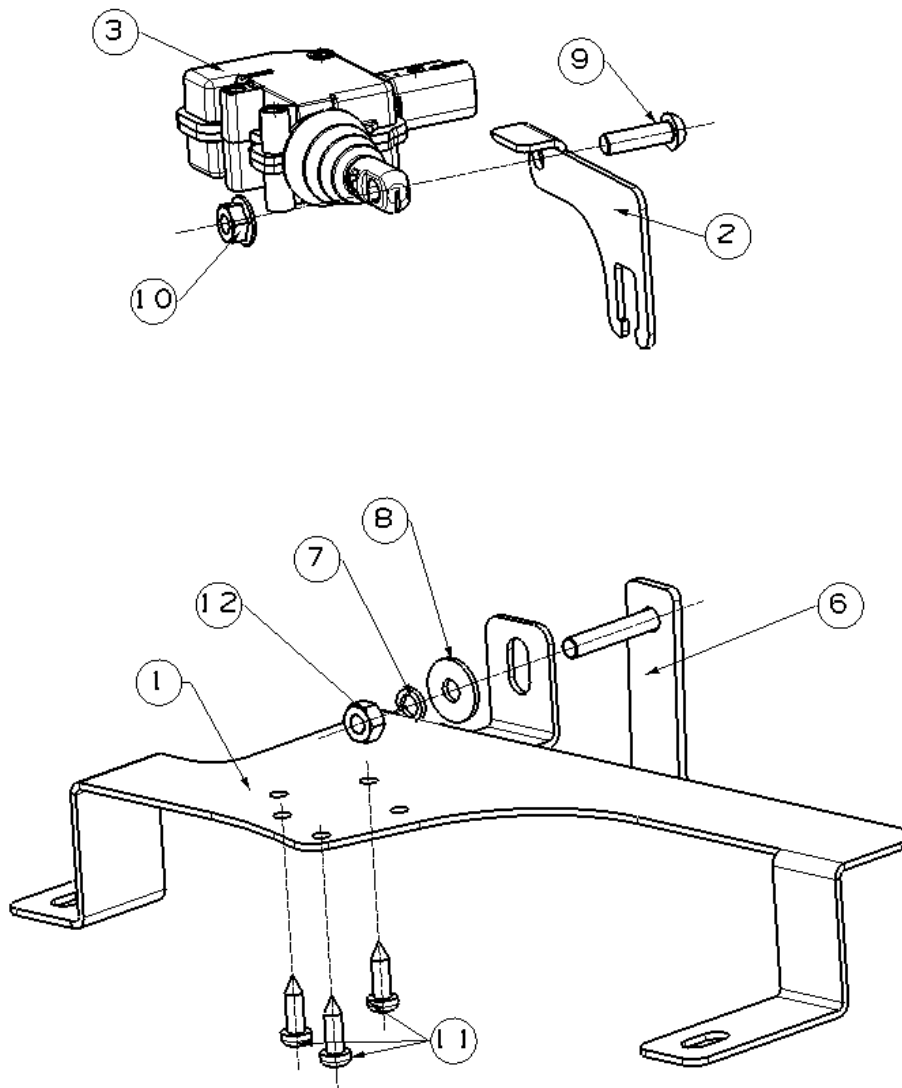
Remove the plastic cover plate and the steel cover plate on tailgate after losing the 8 screws orderly.



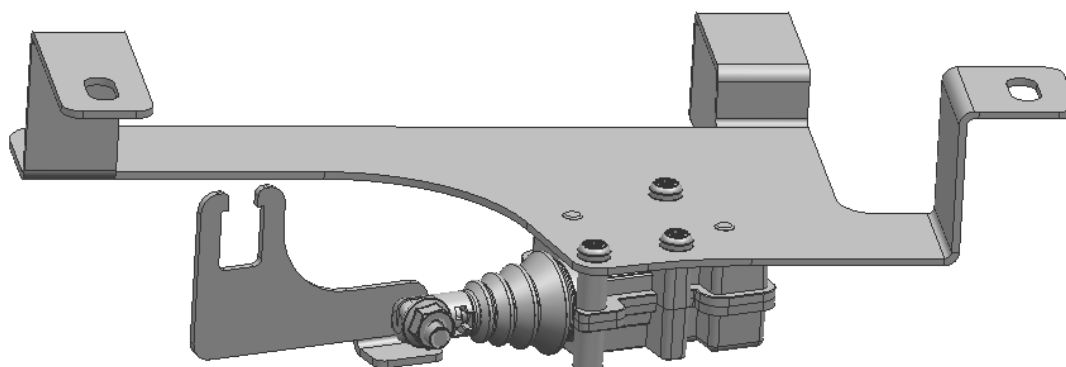
Item NO: PW036809

Name: Tailgate Central Locking Kit For Nissan Navara NP300 14-20

STEP TWO Installing diagram:



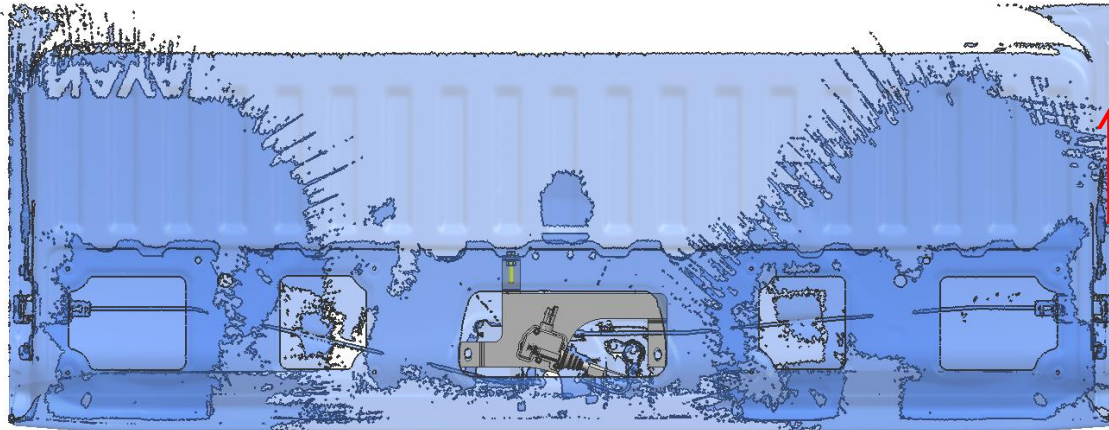
Installing Bracket, refer to the diagram above, Combine ① Bracket、② Lock catch、③ Actuator with ⑥Hexagon Socket Button Head Screws M6_20、⑦Hex flange nut M6 and ⑧ Phillip tapping screw ST4.8_16. Finished as the diagram shows below.



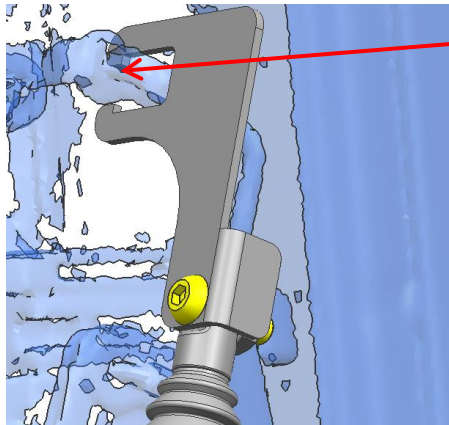
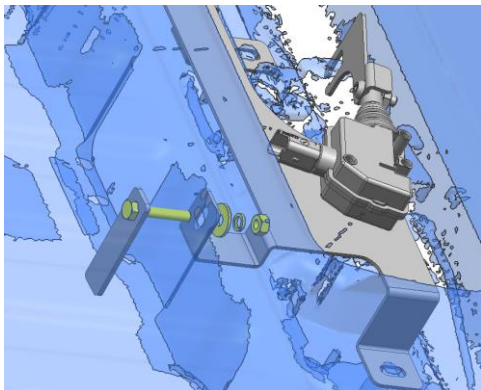
STEP THREE:

After the assembly, put the bracket assembly into inside of the tailgate and fixing up with

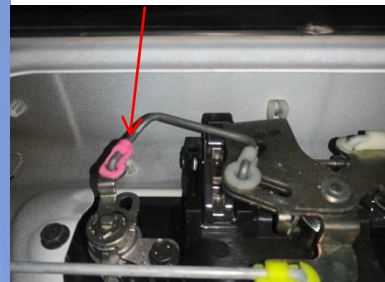
⑥ T shape bolt M6 ⑦ M6 Spring Washer ⑧ M6 Flat Washer ⑫ Hex nut M6 as the diagram shows below; After the installation, attend to whether the ② lock catch is installed on the correct position, slightly move the lock catch and see whether it is running softly.



Direction of arrow is pointing to front



Attend to the position of lock catch should stick on the bar.



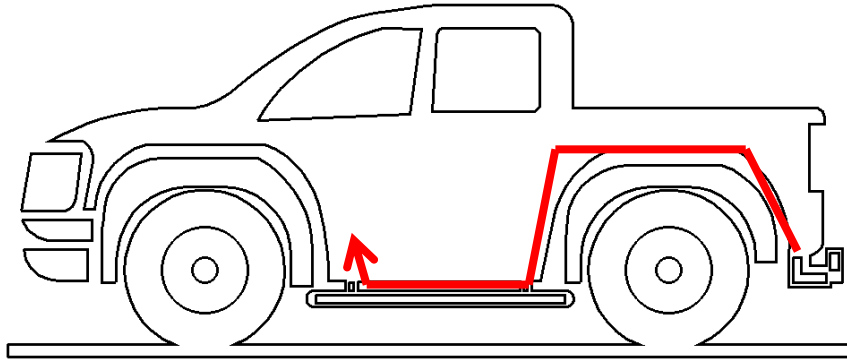
Install the steel cover plate back to the tailgate after the installation, wiring harness connection and testing. The ways of wiring harness connection show below.

Item NO: PW036809

Name: Tailgate Central Locking Kit For Nissan Navara NP300 14-20

STEP FOUR: Wiring harness connection

Connect one side of wiring with the actuator, and route it belonging of the inside of tailgate to the chassis of car, therefore, route the wiring along to the chassis 'crossbeam and then connect to driver seat's side and gain electrical connection.



Final step:

Finish all the installation, test the tailgate lock function with the remote control, after testing reinstall the fender flare and tailgate cover.