

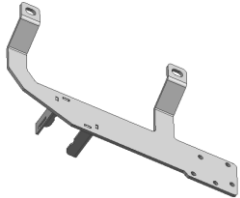

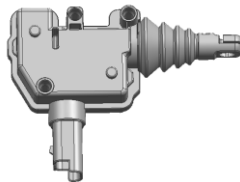



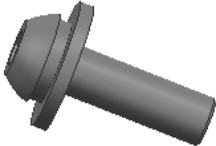

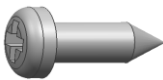

Installation Instruction

E-Tailgate lock for ISUZU D-MAX 2021 (With key hole)

CAUTION:


1. The figures here are for reference only and may have differences with the actual product you received, however they share the same assembly way.
2. Please read the instruction completely for easy installation, which will also help you to avoid scratches or other potential damages to your appealing car.

PART LIST:

NO.	QTY	NAME	NO.	QTY	NAME
①	1	 Bracket 1	②	1	 Bracket 2
③	1	 Actuator	④	1	 Wire harness (Universal)
⑤	2	 T-Shaped clamp (wire harness 0.2-0.5)	⑥	1	 Allen Wrench S=4
⑦	2	 Hexagon socket head cap screws, spring washers and flat washers assembly M6_20	⑧	1	 Non-standard washer D8_22_2
⑨	3	 Phillip tapping screw ST4.8_16	⑩	1	 Hexagon Socket Button Head Screws M6_20

Item NO.: PW046504

Name: E-Tailgate lock for ISUZU D-MAX 2021 (With key hole)

⑪	1	 Hex flange nut M6			
---	---	--	--	--	--

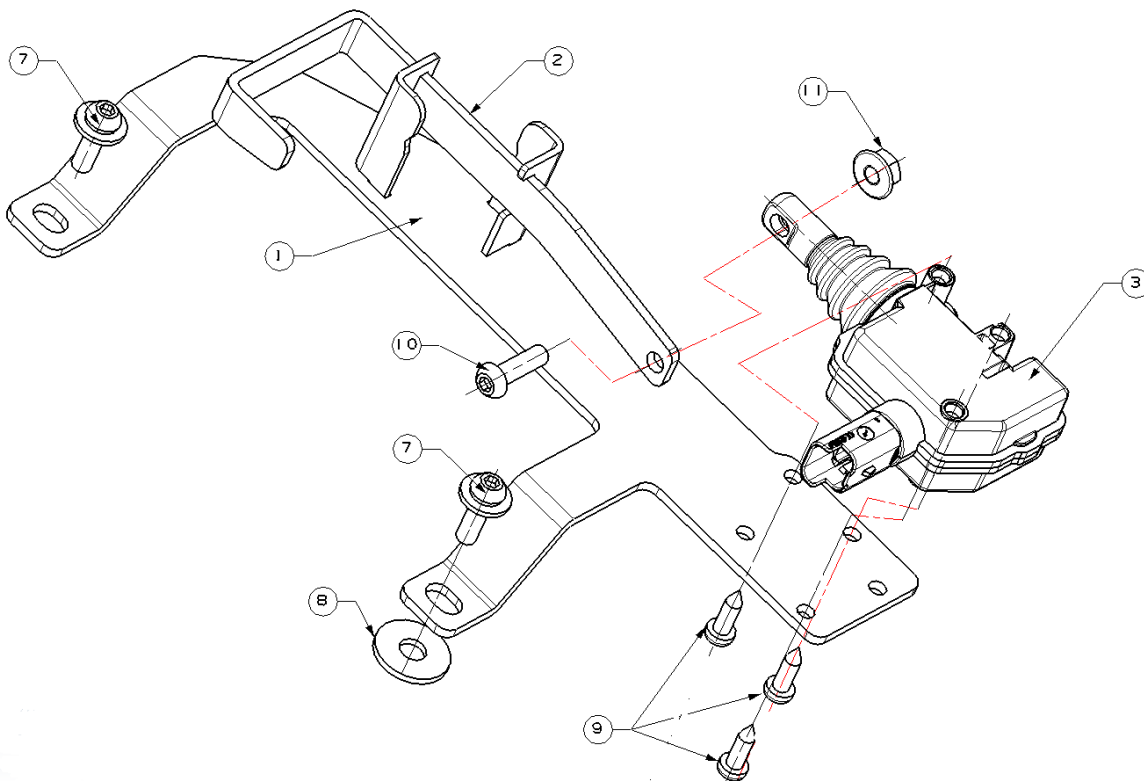
STEP ONE: Brackets Installation:

Remove the bedliner plate & steel cover plate on tailgate by loosening the screws.



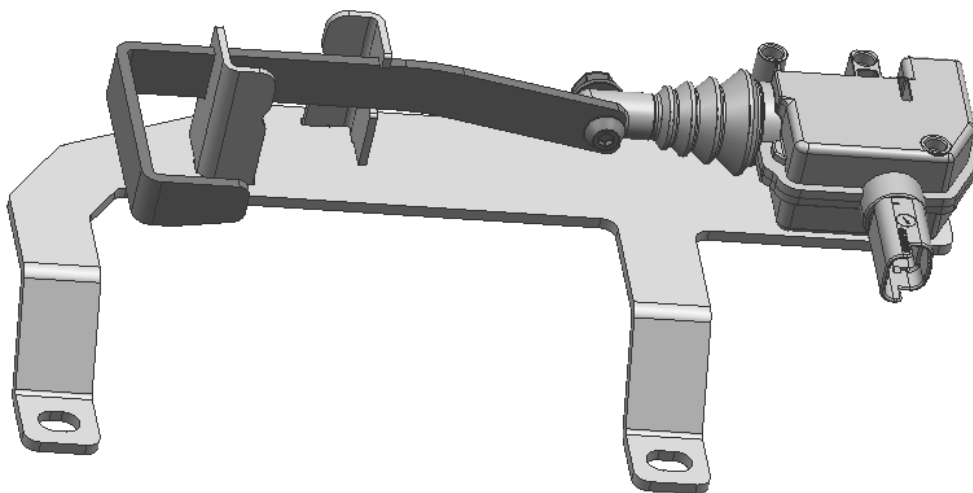
Installation Fig.

As below photo shows, install ① bracket 1, ② bracket 2 and ⑤ actuator with ⑧ ⑨ ⑩ ⑪ ⑫.

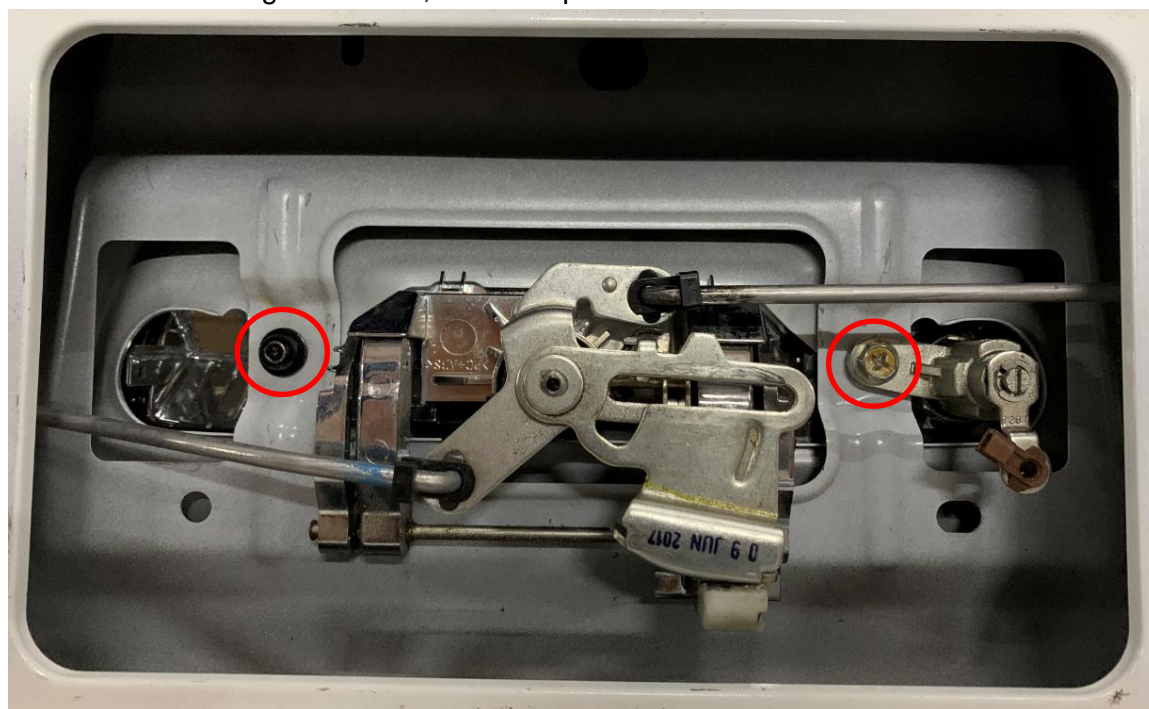


Item NO.: PW046504

Name: E-Tailgate lock for ISUZU D-MAX 2021 (With key hole)

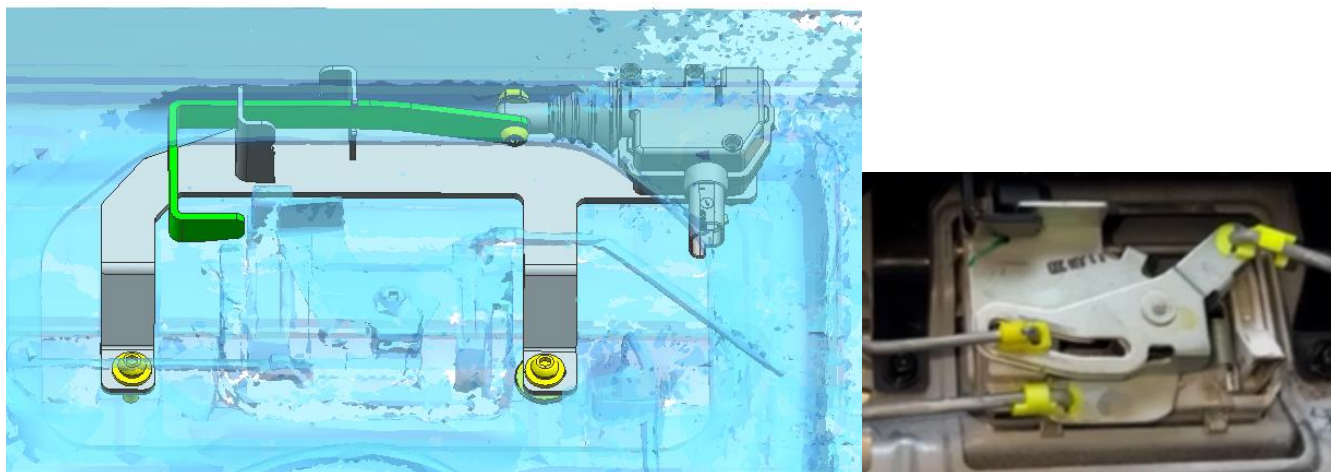


Remove the two original screws, as below picture shows.



Install the bracket assembly into the tailgate, fasten it with the two original screws mentioned above.

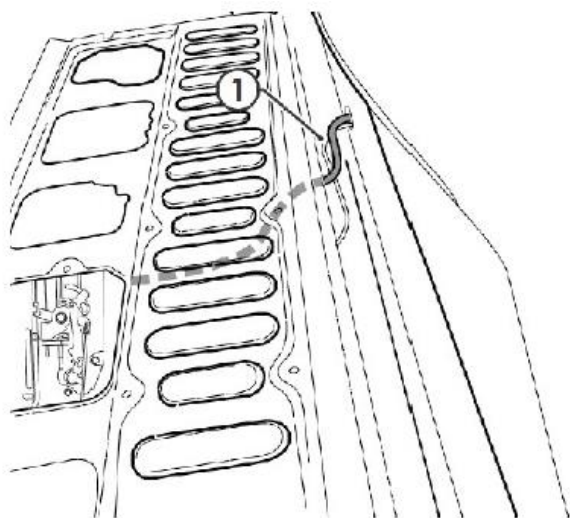
Install ③ bracket 3 and fasten it with ⑧ ⑨ ⑪ :



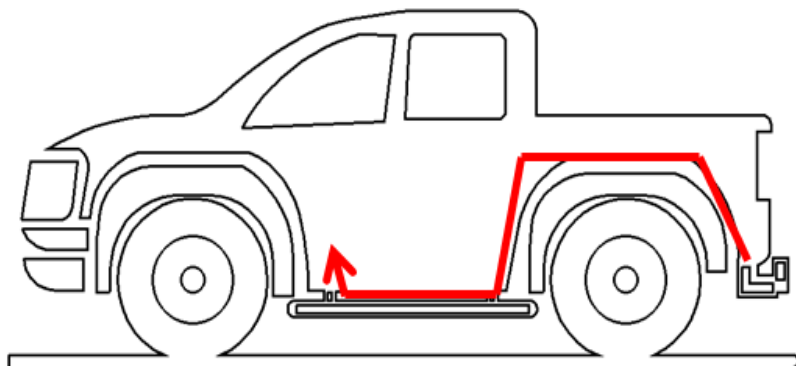
Before reinstall the cover plate on tailgate, please test the locking function.

● Wiring harness connection:

1. Connect the wiring to the actuator the route the ④ actuator wiring harness out of the tailgate and underneath the vehicle.



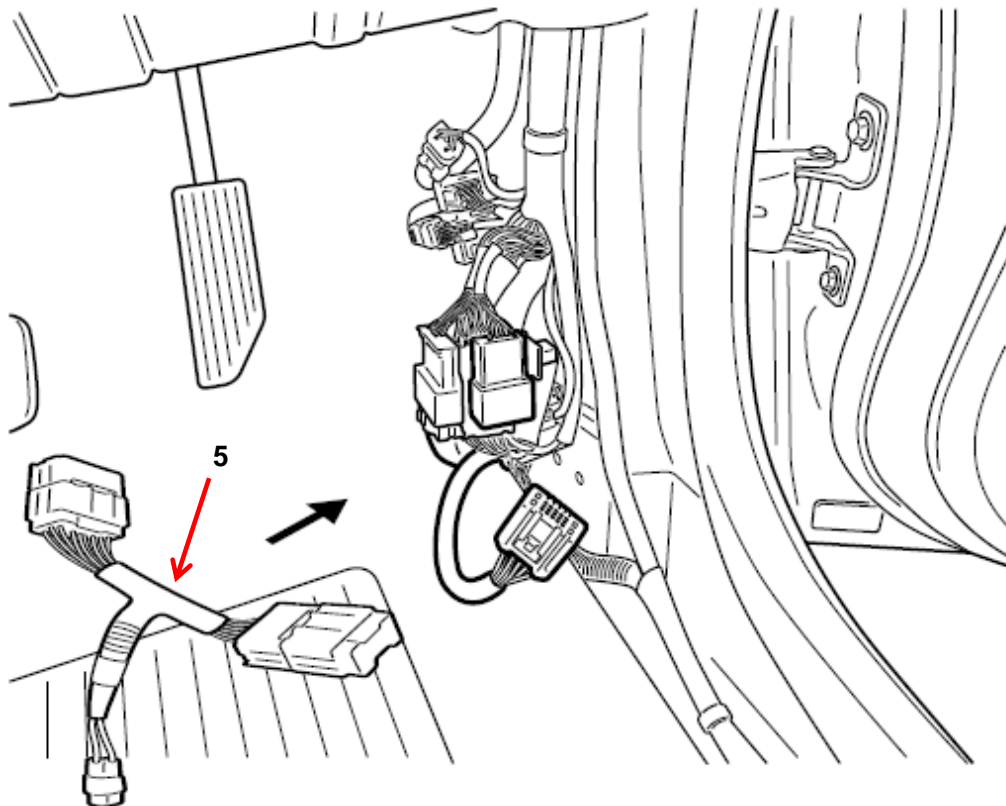
2. Route the wiring harness along the chassis rail to the driver seat.



3. Locate and disconnect the connector in the driver side kick panel area.



4. Connect the ⑤ wire harness 2 to vehicle harness. Also connect the other plug with the ④ wire harness 1, then press the key fob to check the tailgate locking function.



5. After completing the above installation, use the remote control to check whether the installation is ok, and then restore the tailgate cover to its original position.

