

Roller Cover Installation Manual







Before installing

Please read the instructions thoroughly for installation, which will also help you avoid scratches or other potential damage to your attractive car.

Please periodically check and tighten all hardware and clean the product to maintain its appearance.

The following data is for reference only and may differ from the actual product you received, but they are assembled in the same way.

Parts List

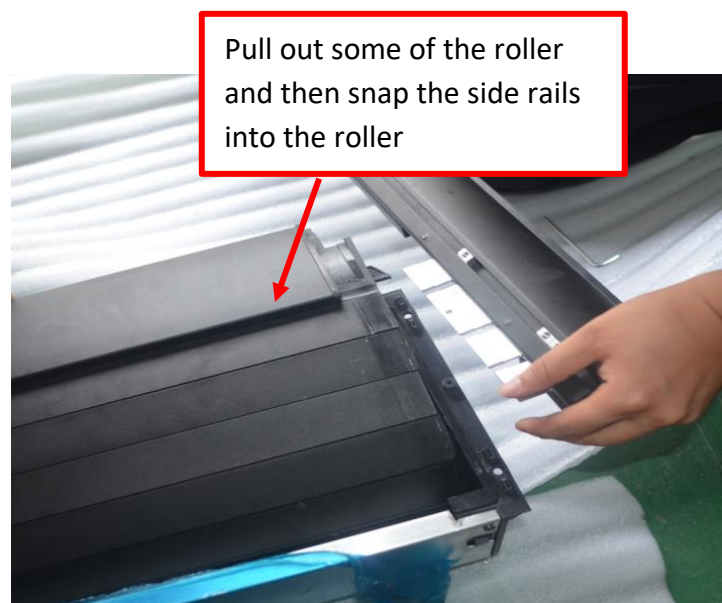
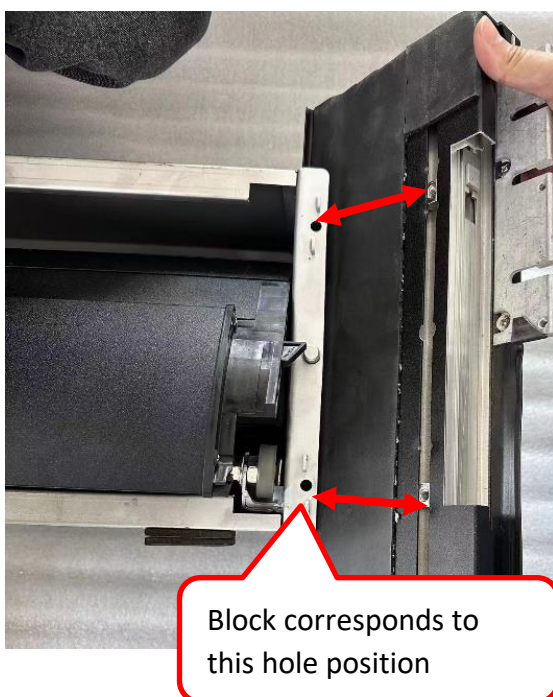
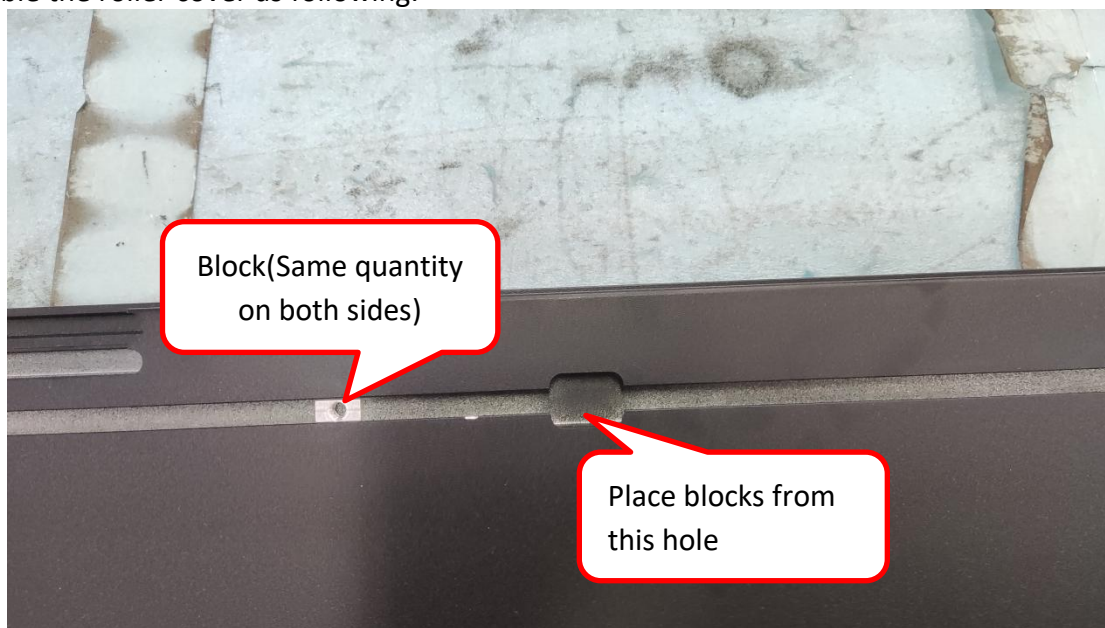
Roller	Side Rails
	
AL. Plate	Clips
	
Standard Parts	Drain-Pipe&Hose Clamp
	

Installation Steps

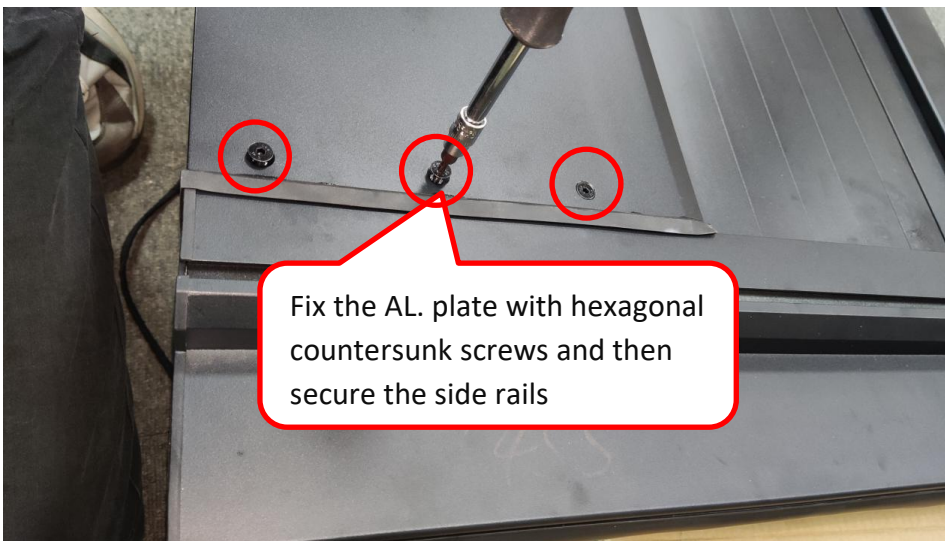
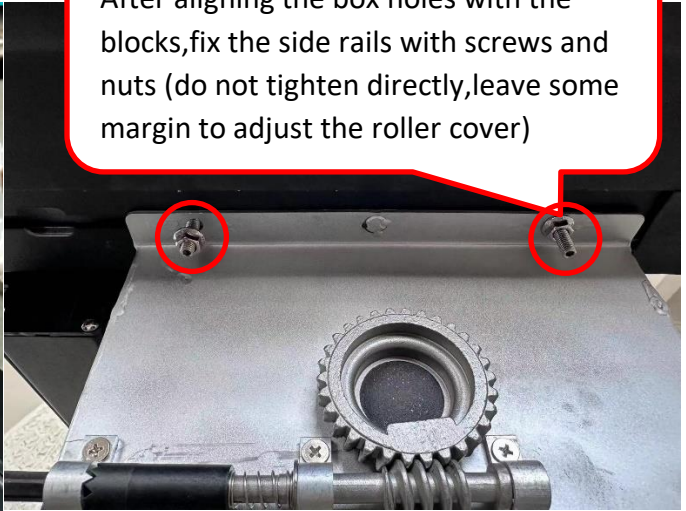
1. Open the packaging and take out all the accessories.



2. Assemble the roller cover as following.



7
After aligning the box holes with the blocks, fix the side rails with screws and nuts (do not tighten directly, leave some margin to adjust the roller cover)

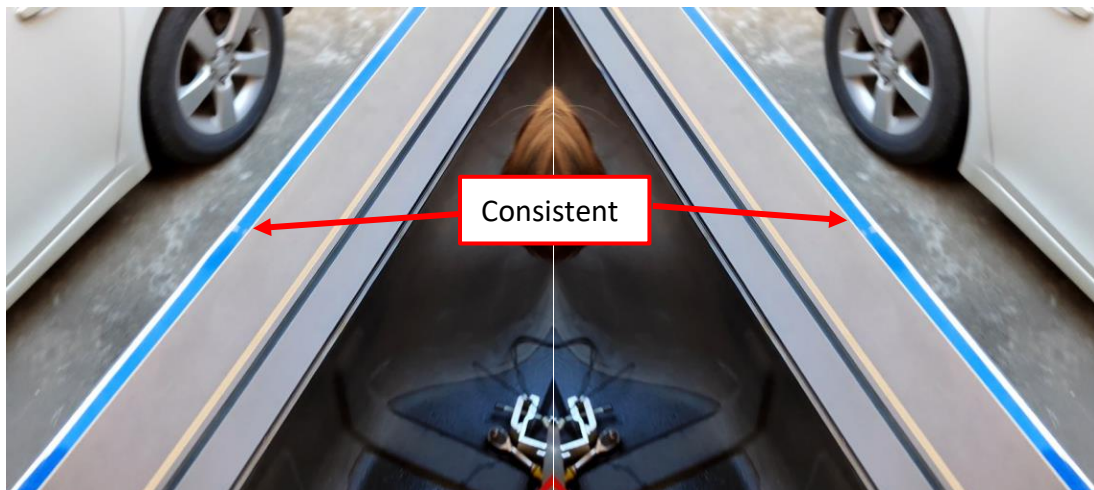
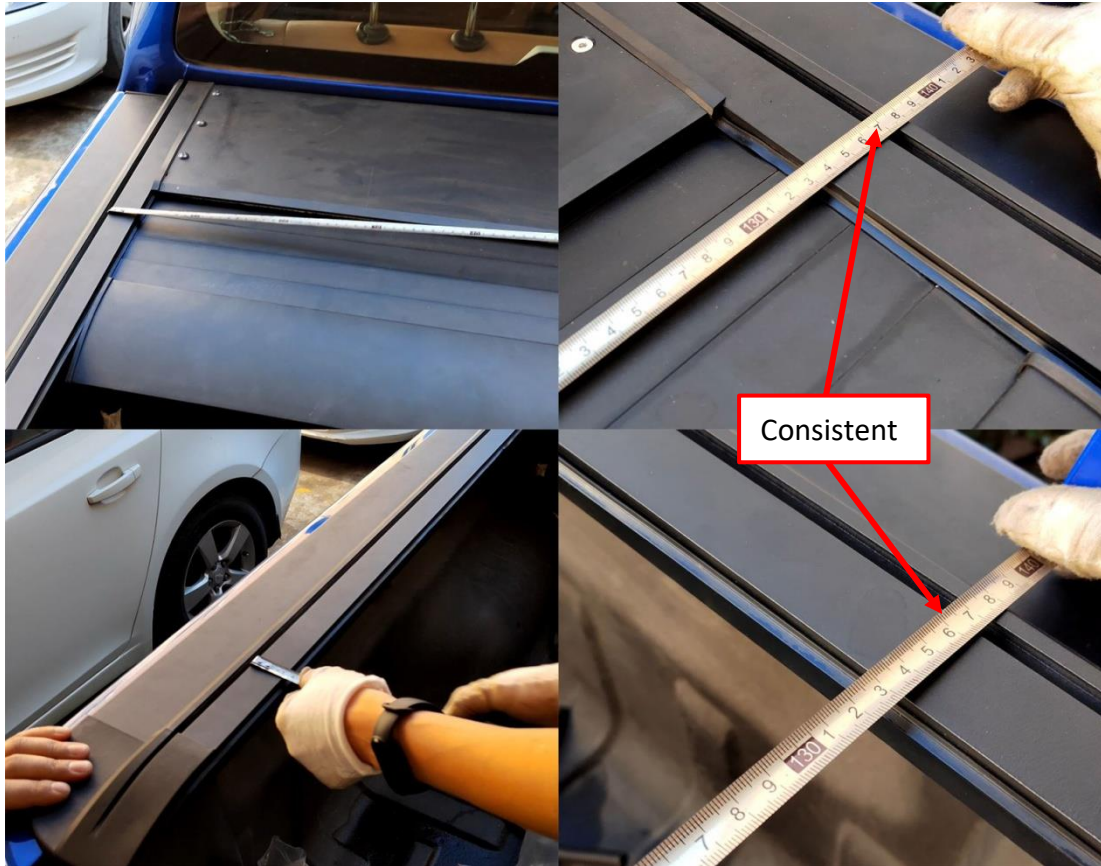


Fix the AL. plate with hexagonal countersunk screws and then secure the side rails

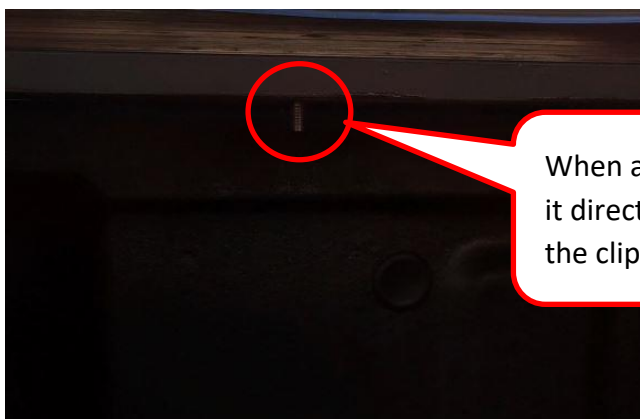


After assembly

3. Place the assembled manual roller cover tightly against the inner side of the car on the carriage, measure the front and rear spacing of the two side rails with a ruler, and ensure that the side rails are placed in the middle of the carriage, with consistent spacing required



4. Slide the block to the appropriate position and install the screw

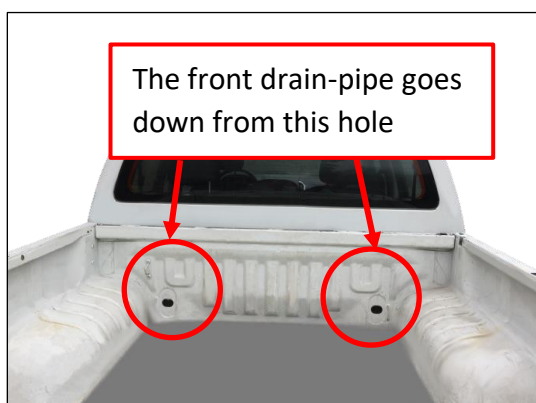


When assembling the screw, do not tighten it directly. Leave some margin and assemble the clips before tightening it

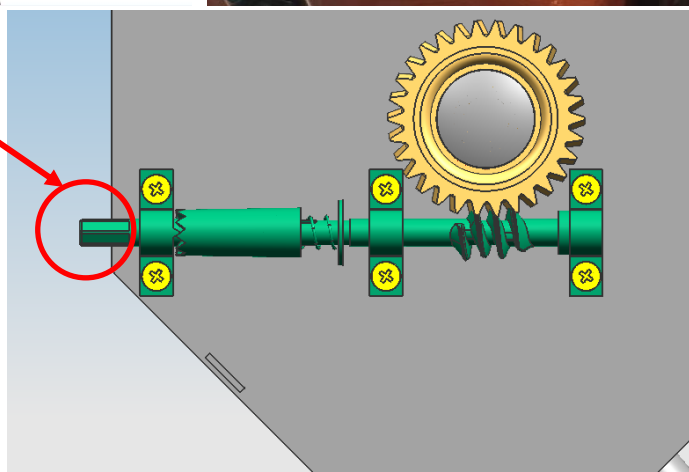
5. Install the aluminum clips at the corresponding screw position, and fix the aluminum clips and side rails with a hexagonal flange nut. {Attention: The contact surface between the aluminum clips and the side rails should be flush}



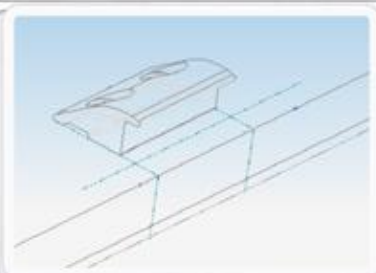
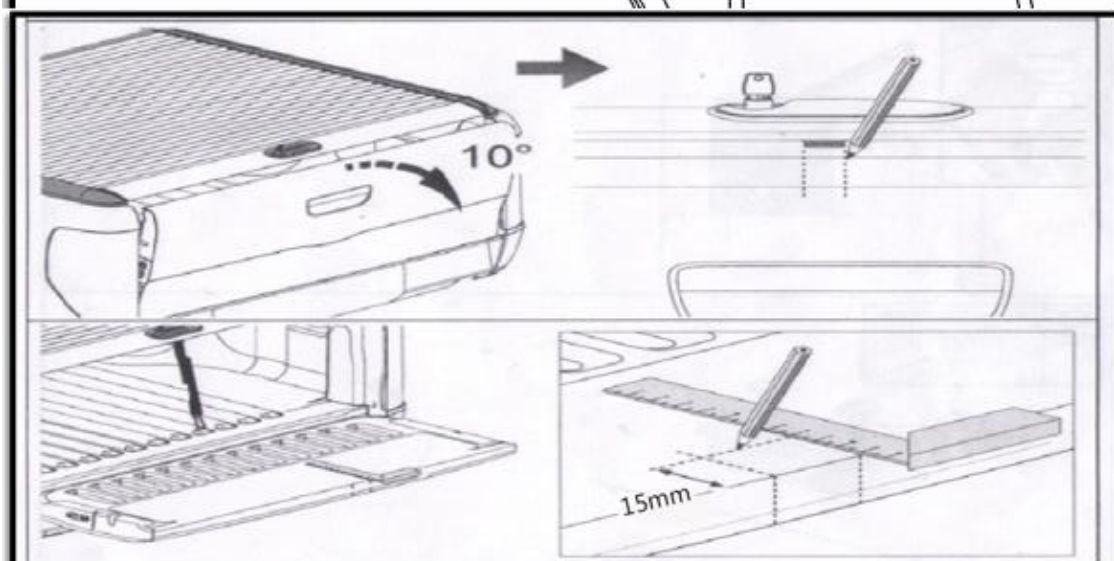
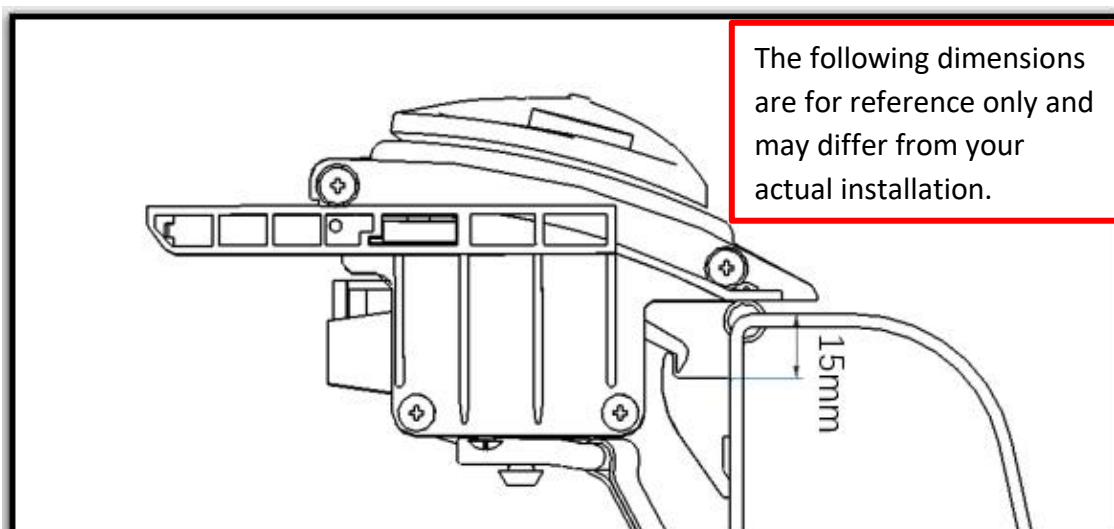
6. Guide the drain-pipe to the outside of the car



This position can adjust the force, increasing clockwise and decreasing counterclockwise



7. Install the bracket on the rear tailgate



Find the corresponding position and mark it, then drill and install bracket

