

Bonnet Protector

Part Number: 92253685

Contents	Description	Quantity
	Bonnet Protector	1
	Alcohol Wipe	1
	Outer Wing Clips	4
	Centre Wing Clips	2
	Abrasive Resistant Tapes	6
	Black Washers	6
	Self Tapping Screws	2
	Small Screws	6
	Screws Plugs	2
	Nut Inserts	6

Tools Required

- Clean Soft Cloth, Philips Screw Driver.

Caution

- Do not use abrasive, spirit or solvent-based cleaners.

Installation Instructions

1. Read instructions thoroughly before commencing fitment. Wash and dry the vehicle. Open the bonnet and thoroughly clean underneath the forward edge of the bonnet. Refer to figure 1.

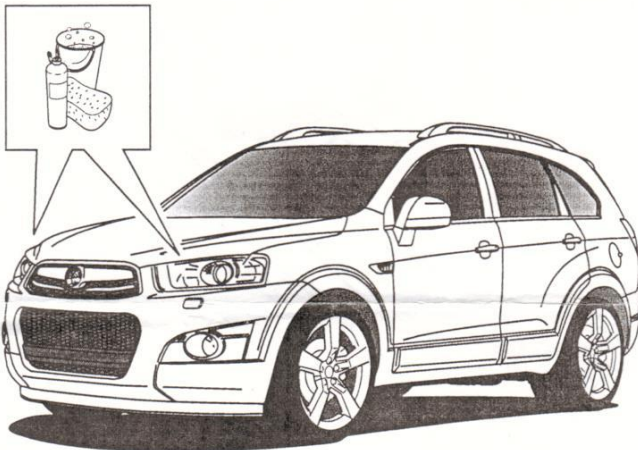


FIGURE 1

2. Trial fit the Bonnet Protector (1) centrally on the bonnet. Use the indentation (2) in the lower edge of the Bonnet Protector as a guide. Refer to figure 2.

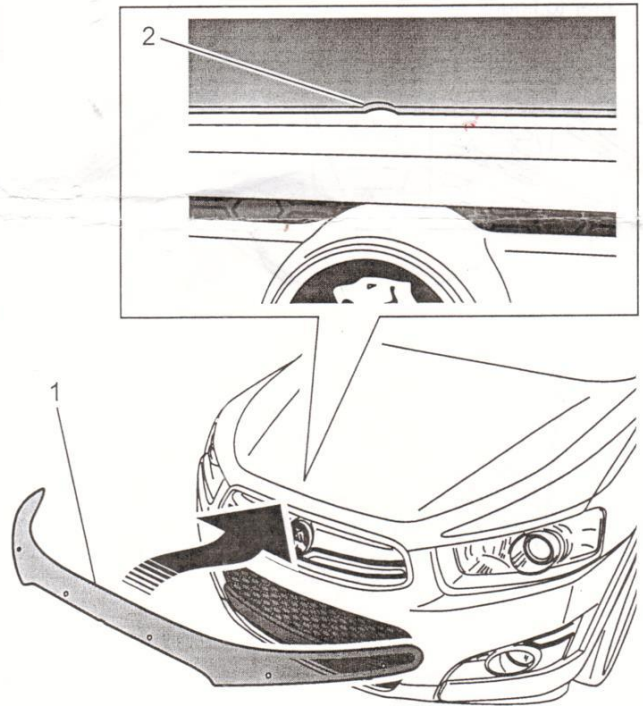


FIGURE 2

3. Note and mark with a non-permanent marker the positions of the two centre holes in the Bonnet Protector corresponding with the holes in the under side of the bonnet (1). Also note and mark the four outer wing clip positions corresponding to the outer holes of the Bonnet Protector (2). Remove the Bonnet Protector. Refer to figure 3.

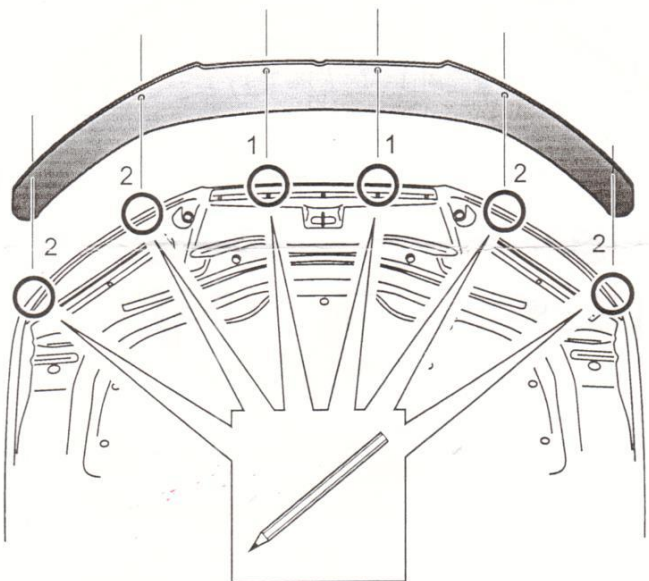


FIGURE 3

Installation Instructions

- Remove the two plastic bonnet seal retaining clips (1) that correspond to the two Bonnet Protector centre hole locations previously marked in step 3. Refer to figure 4.

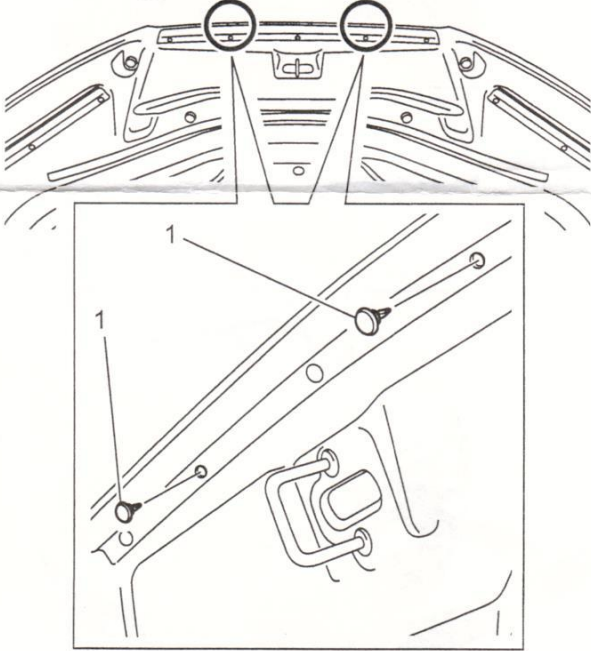


FIGURE 4

- At the noted outer wing clip and centre wing clip positions clean the bonnet surface with the alcohol wipe provided. Wipe away any residue with a clean dry cloth. Adhere the abrasive resistant tape strips (1) to the bonnet surface. Fold strips over so that half of the tape strip is adhered to the outside and half on the under side of the bonnet as shown. Refer to figure 5.

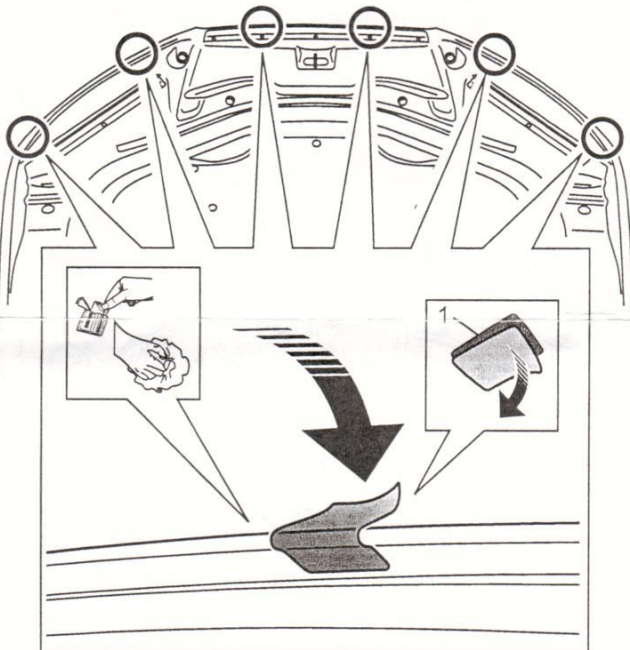


FIGURE 5

- Fit the nut inserts (1) into the centre wing clips (2) and into the outer wing clips (3) as shown. Refer to figure 6.

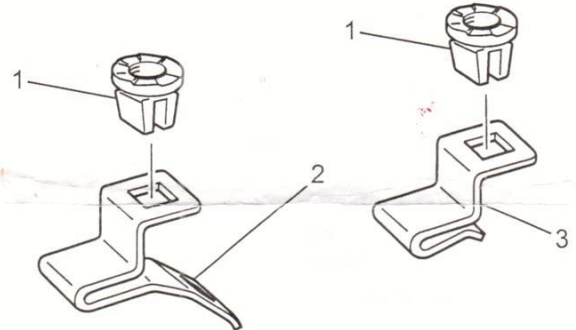


FIGURE 6

- Position the centre clips (1) onto the bonnet and underneath the bonnet seal (2).

IMPORTANT: Ensure that the clips are positioned over the abrasive resistant tape and do not come in contact with any of the bonnet paintwork. Failure to do this may result in permanent paint damage.

Refer to figure 7.

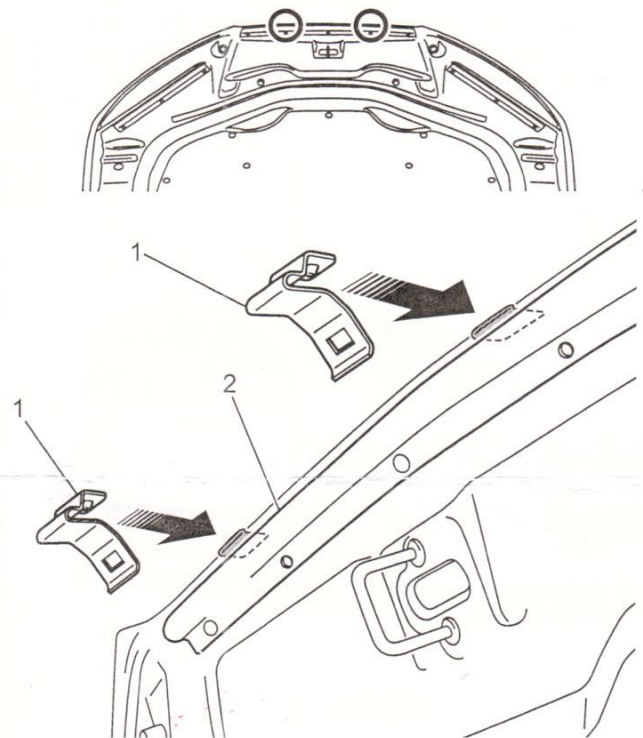


FIGURE 7

Installation Instructions

8. Use the self tapping screws (1) and screw plugs (2) provided to secure the centre wing clips (3). Note that the self tapping screws also secure the bonnet seal (4) to the bonnet, replacing the retaining clips removed in step 4. Sequence: Abrasive resistant tape, centre wing clips, screw plug, bonnet seal, self tapping screw. Refer to Figure 8.

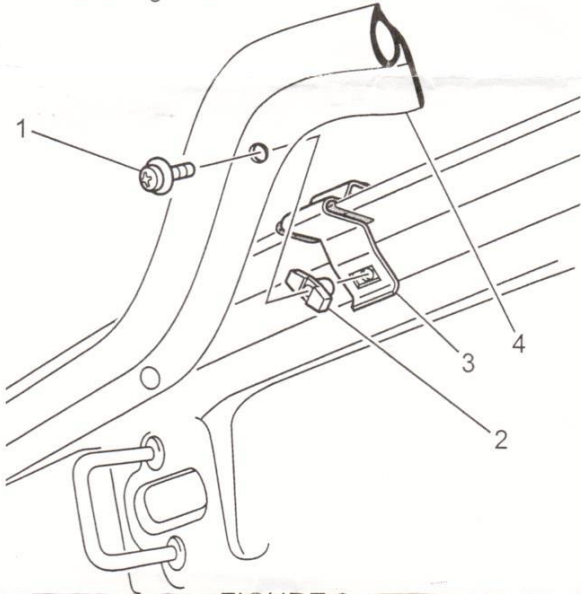


FIGURE 8

9. Slide the outer wing clips (1) over the abrasive resistant tape strips (2) on the bonnet lip in the four positions indicated below.

IMPORTANT: Ensure that the clips are positioned over the abrasive resistant tape and do not come in contact with any of the bonnet paintwork. Failure to do this may result in permanent paint damage.

Refer to figure 9.

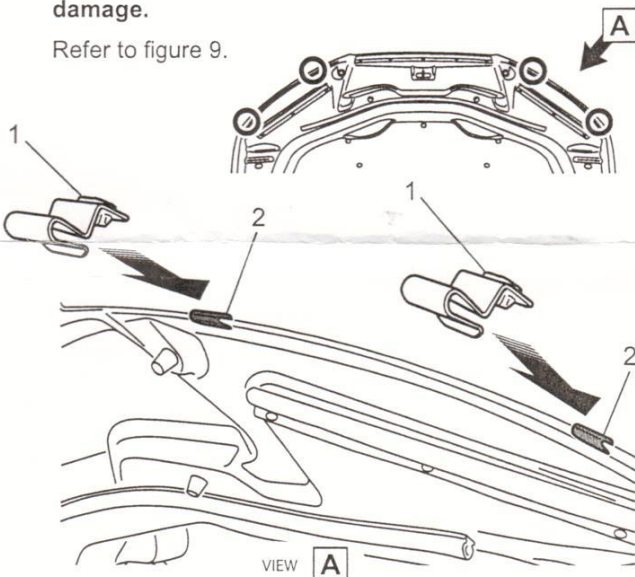


FIGURE 9

10. Secure the Bonnet Protector (1) centrally to the centre wing clips (2) and then to the outer wing clips (3) using the small screws (4) and black washers (5) provided. Refer to Figure 10.

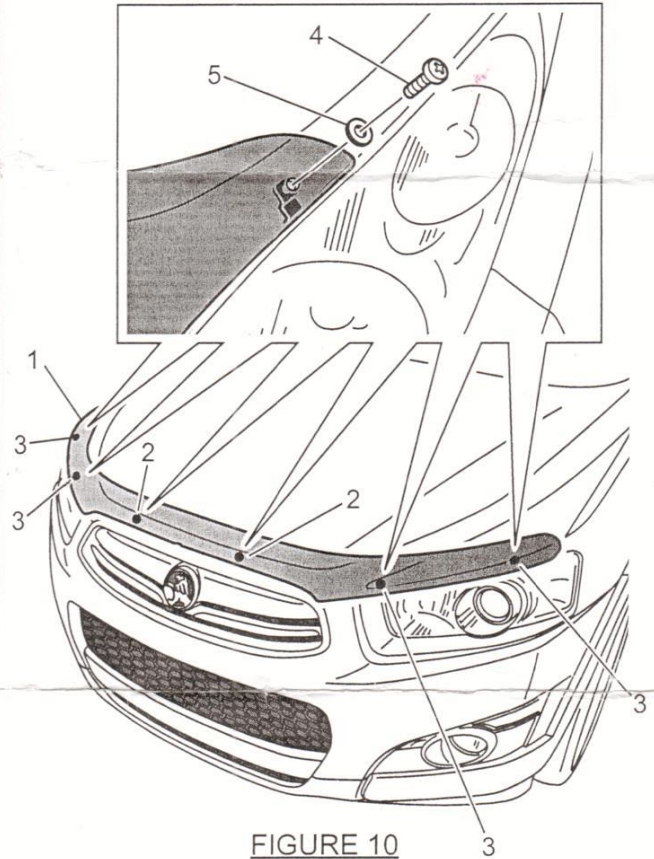


FIGURE 10

11. Carefully close the bonnet checking for correct fitment of the Bonnet Protector. **CAUTION: To avoid damage to the bonnet do not slam.** Refer to figure 11.



FIGURE 11

TO REMOVE: Reverse the above procedure.