

INSTALLATION INSTRUCTION

ITEM NO.: RV0150357ZJ

DESCRIPTION: BRACKET FOR Q1 GRILL GUARD FOR REVO 2015+

ATTENTION

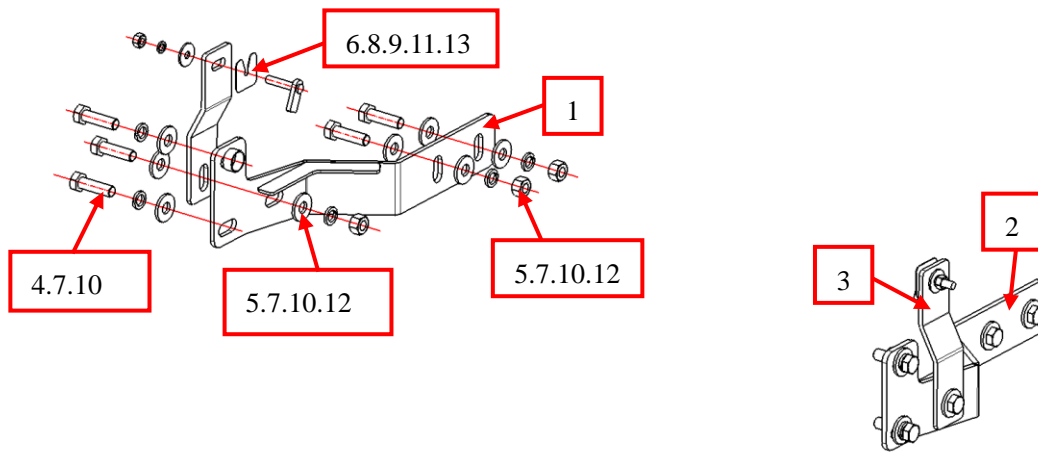
- Please read this installation menu before installing this part. Protect your car properly in case there is any scratch might have.
- You may need to periodically to re-tighten all hardware for safety use after installation.
- Installation pictures are only for your reference, there might be some differences between pictures and real parts but no affect for your fitting.

PART LIST

NO.	NAME	QTY	REMARK	NO.	NAME	QTY	REMARK
1	Bracket (L)	1		8	Plastic BlockΦ8	2	Φ8
2	Bracket (R)	1		9	Spring Washer	2	Φ8
3	Brackrt1	2		10	Spring Washer	10	Φ12
4	Hexagon Bolt (fine thread)	4	M12*1.25*40	11	Hexagon Nut	2	M8
5	Hexagon Bolt	6	M12*40	12	Hexagon Nut	6	M12
6	Large Washer	2	Φ8*25*2.0	13	T-Bolt	2	M8
7	Large Washer	16	Φ12*30*3.0	14			

Note: The installation is the same on the left and right sides

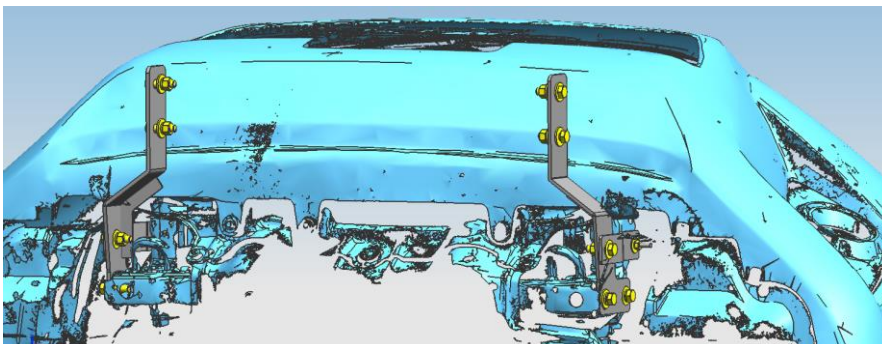
INSTALLATION PICTURE



INSTALLATION PROCEDURE

Step 1: Refer to Part List to check if all hard ware are included.

Step 2: Refer to the following pictures to assemble the nudge bar and brackets.



Step 3: Install the nudge bar on the bracket and adjust the mounting position of the bracket according to the position of the of the nudge bar.

Step 4: Check if all hard ware are installed and then fasten all to complete the installation.

Disclaimer: Caused due to improper installation initiates or some related problem and losses, are beyond our company' s quality assurance.