

# Triton Roller Shutter Installation Instruction



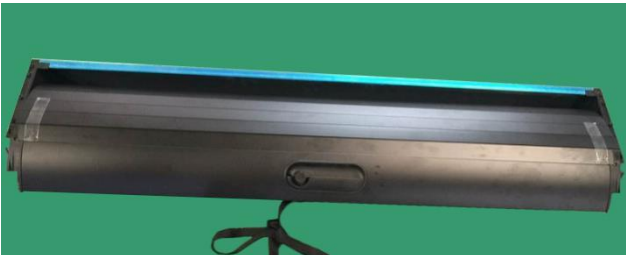



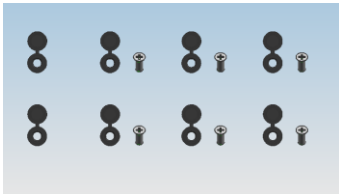
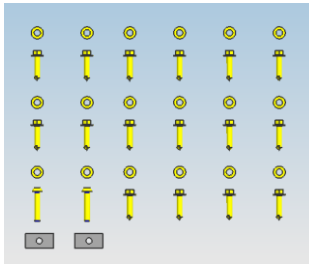


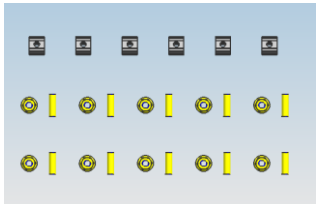

**Before installing**

Please read the instructions thoroughly for installation, which will also help you avoid scratches or other potential damage to your attractive car.

Please periodically check and tighten all hardware and clean the product to maintain its appearance.

The following data is for reference only and may differ from the actual product you received, but they are assembled in the same way.

**Parts List**

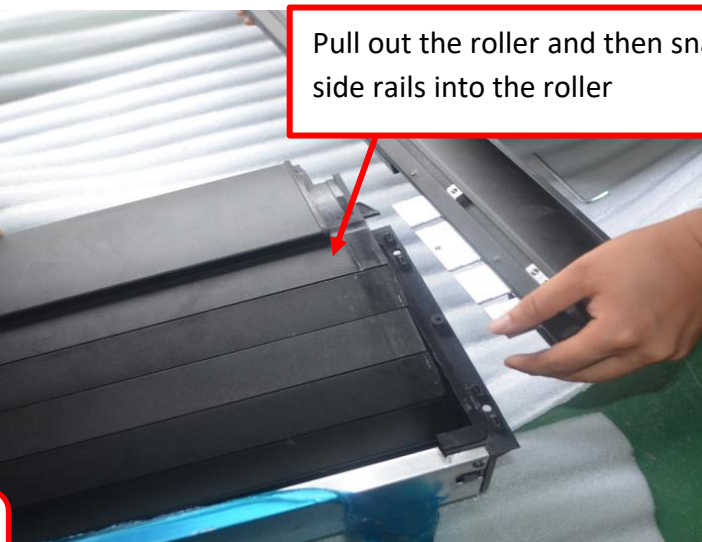
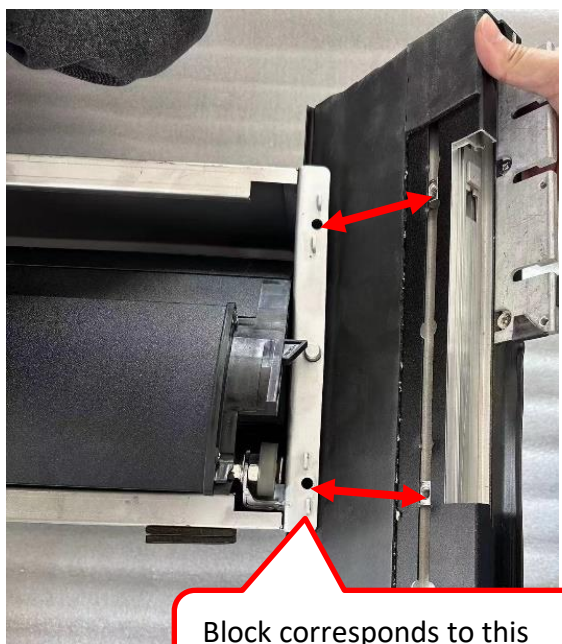
<p><b>A.COVER</b></p> 	<p><b>B. SIDE RAILX 2 (LFET AND RIGHT)</b></p> 		
<p><b>C.FRONT COVER PLATE</b></p> 	<p><b>D.baffle</b></p> 		
			
			

## Installation Steps

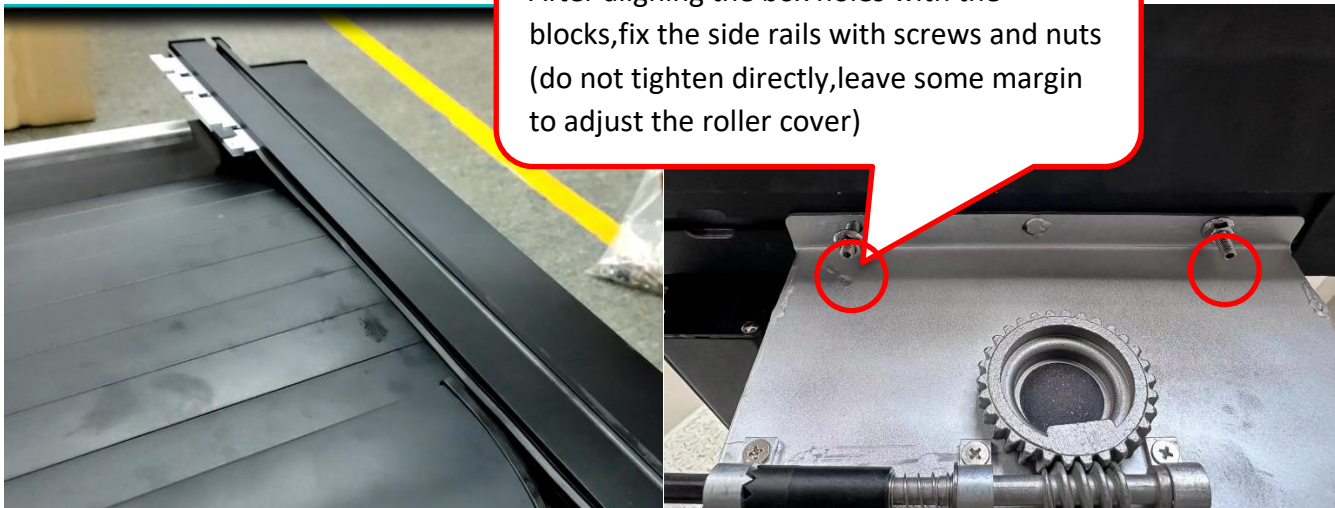
1. Open the packaging and take out all the accessories.



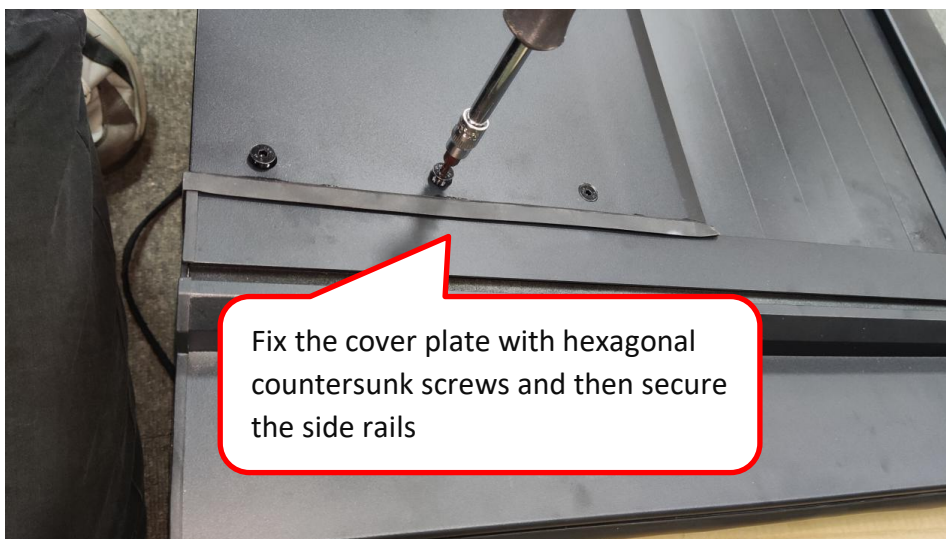
2. Assemble the roller cover as following



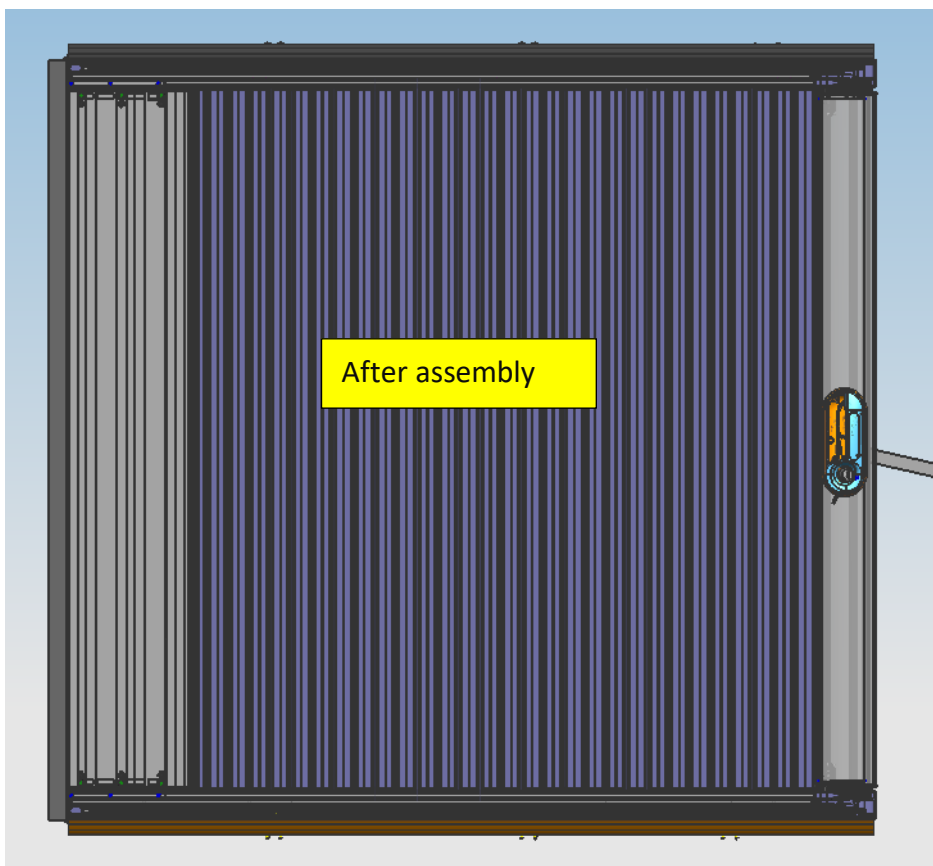
After aligning the box holes with the blocks, fix the side rails with screws and nuts (do not tighten directly, leave some margin to adjust the roller cover)

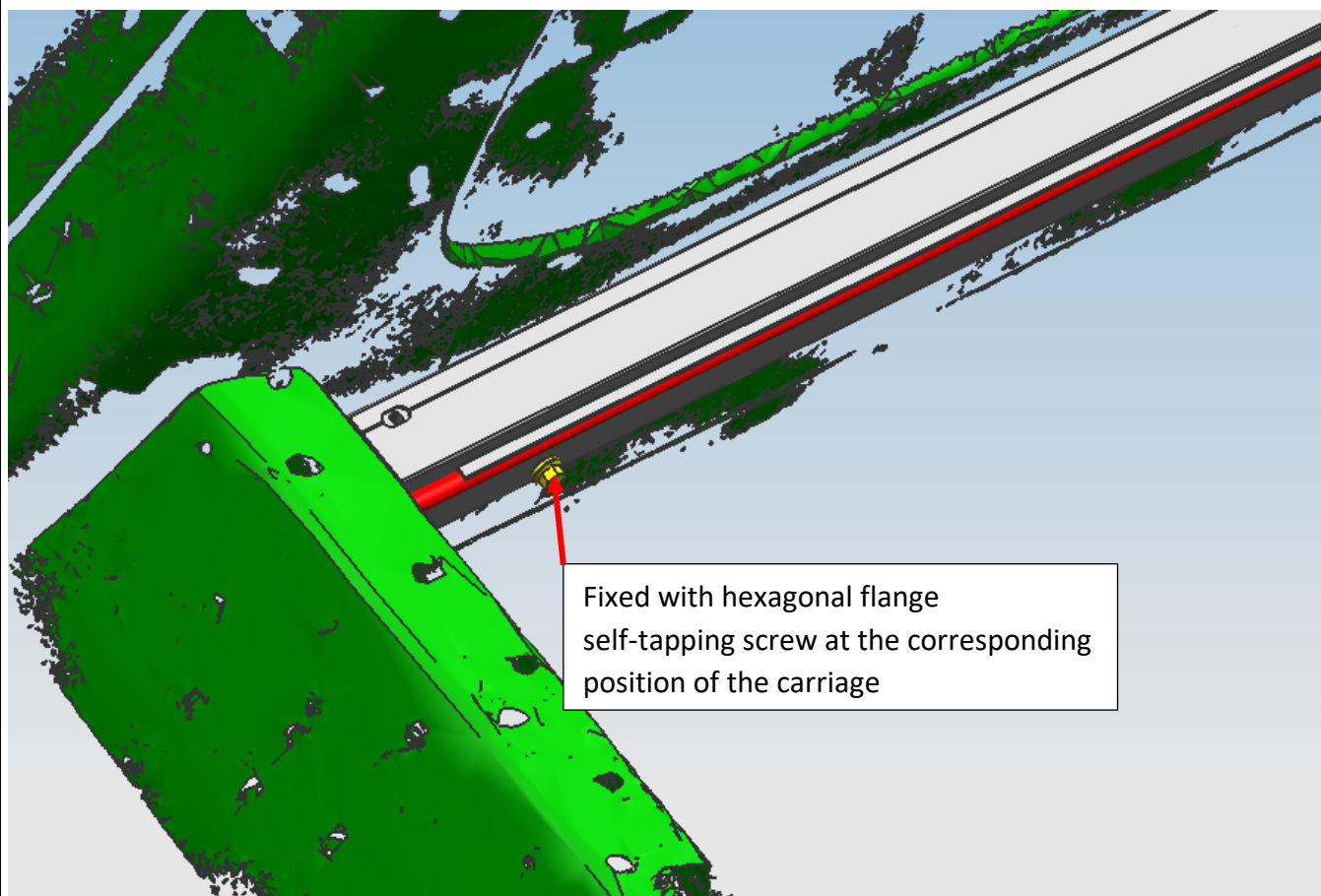


Fix the cover plate with hexagonal countersunk screws and then secure the side rails



After assembly

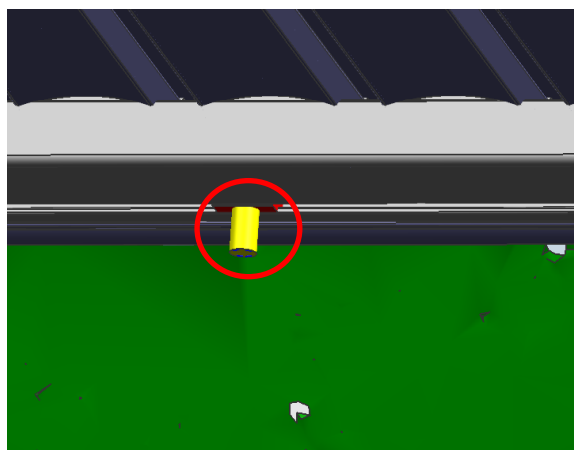




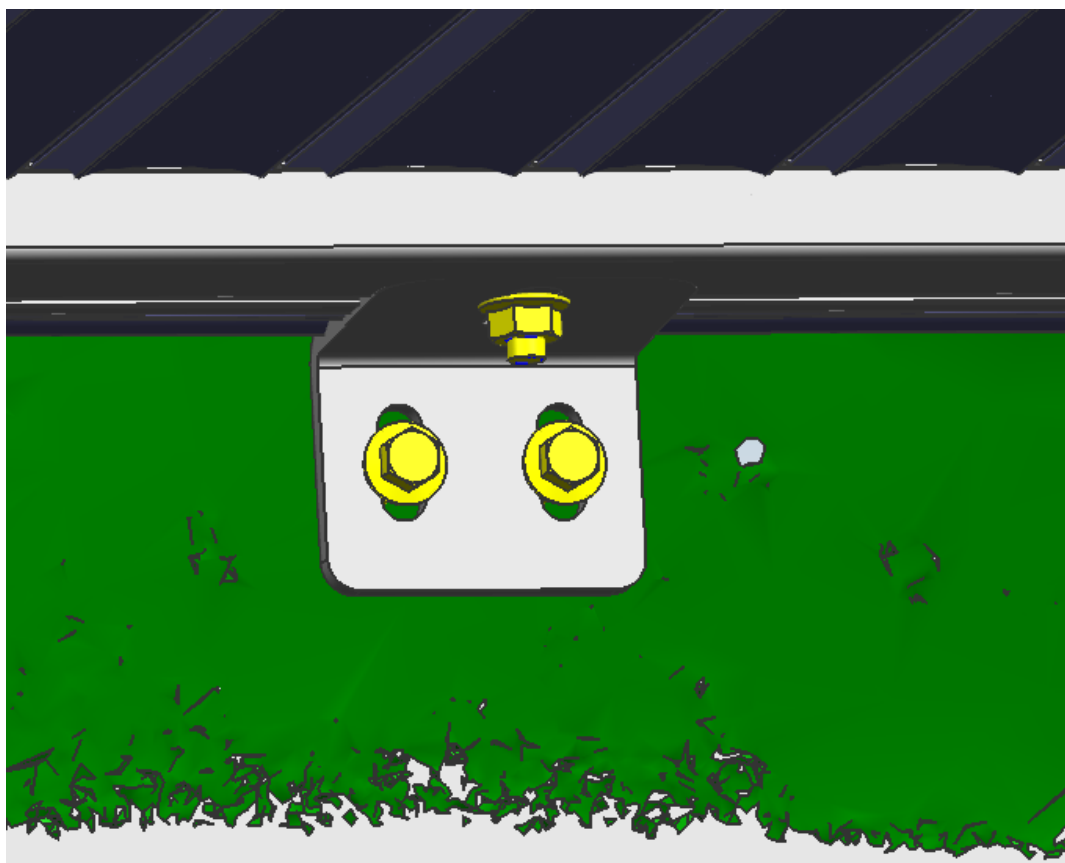
3. Put the assembly roller lid to the carriage, measure the distance between the left and right side rail to ensure that the roller lid is placed in the middle of the carriage.



4. Slide the block to the bracket position and install the screw.

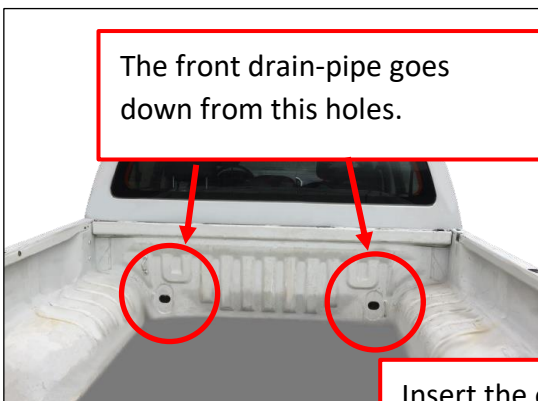


5. Install the bracket at the corresponding position of the screw, fixed with a hexagonal flange self-drilling self-tapping screw on the tub. (The contact surface between the brackets and the side rails should be flush.) and then fixed the bracket and the side rail with hexagonal flange nuts.

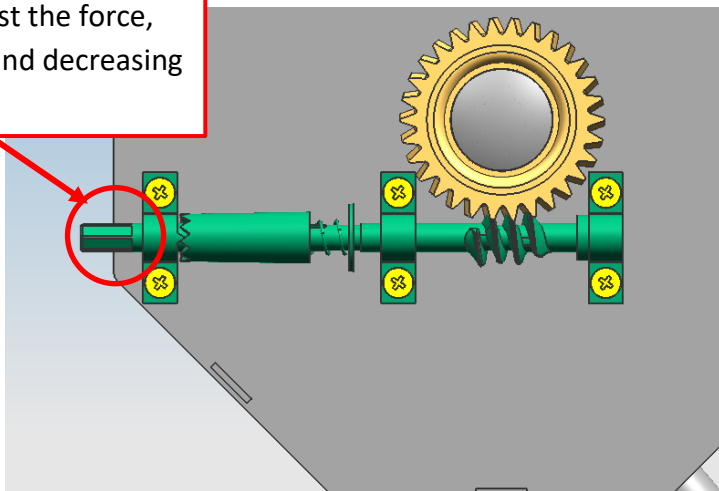




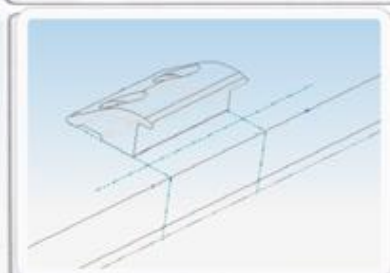
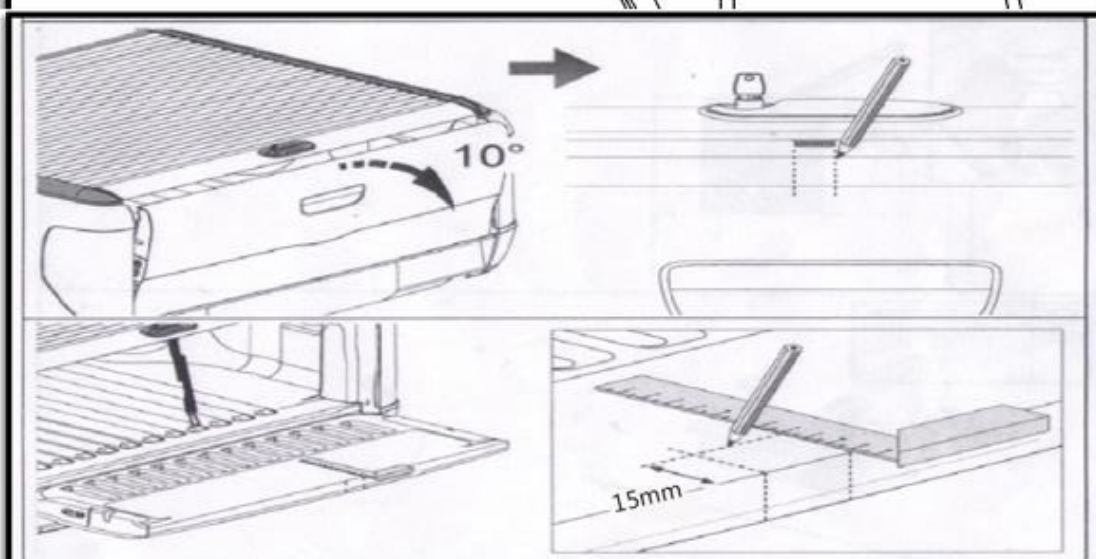
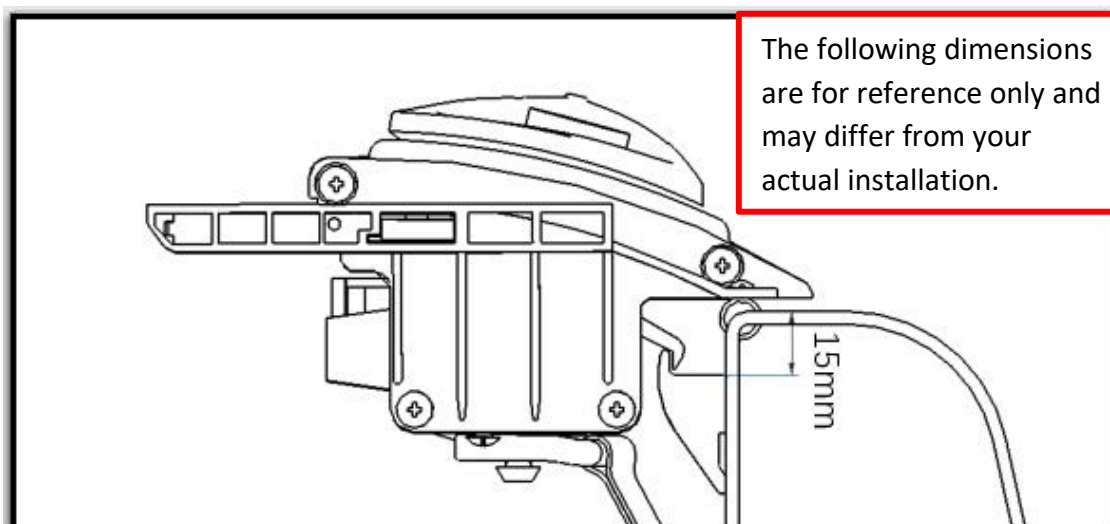
6. Guide the drain-pipe to the outside of the car.



This position can adjust the force, increasing clockwise and decreasing counterclockwise.



## 7. Install the bracket on the rear tailgate



Find the corresponding position and mark it, then drill and install bracket

