

INSTALLATION INSTRUCTION

ITEM NO.: W4-TUBRS-CRBR

DESCRIPTION: CROSS BAR FOR REVO/DMAX/RANGER/TRITON 54"

Attention:

- Please read this installation menu before installing this part. Protect your car properly in case there is any scratch might have.
- You may need to periodically to re-tighten all hardware for safety use after installation.
- Installation pictures are only for your reference, there might be some differences between pictures and real parts but no affect for your fitting.

PART LIST

NO.	NAME	QTY	REMARK	NO.	NAME	QTY	REMARK
1	Cross Bar (Tall)	1		8	Hex socket flat head screw	16	M6*16
2	Cross Bar (Short)	1		9	Large Washer	16	Φ6*18*1.5
3	Bracket (Front Left)	1		10	Spring Washer	16	Φ6
4	Bracket (Front Right)	1		11	Cassette Nut	8	M6
5	Bracket (Rear Left)	1		12	Hex key	1	45# S=4
6	Bracket (Rear Right)	1		13			

REMARK : The Front And Rear Installation Methods Are The Same.

INSTALLATION PICTURE

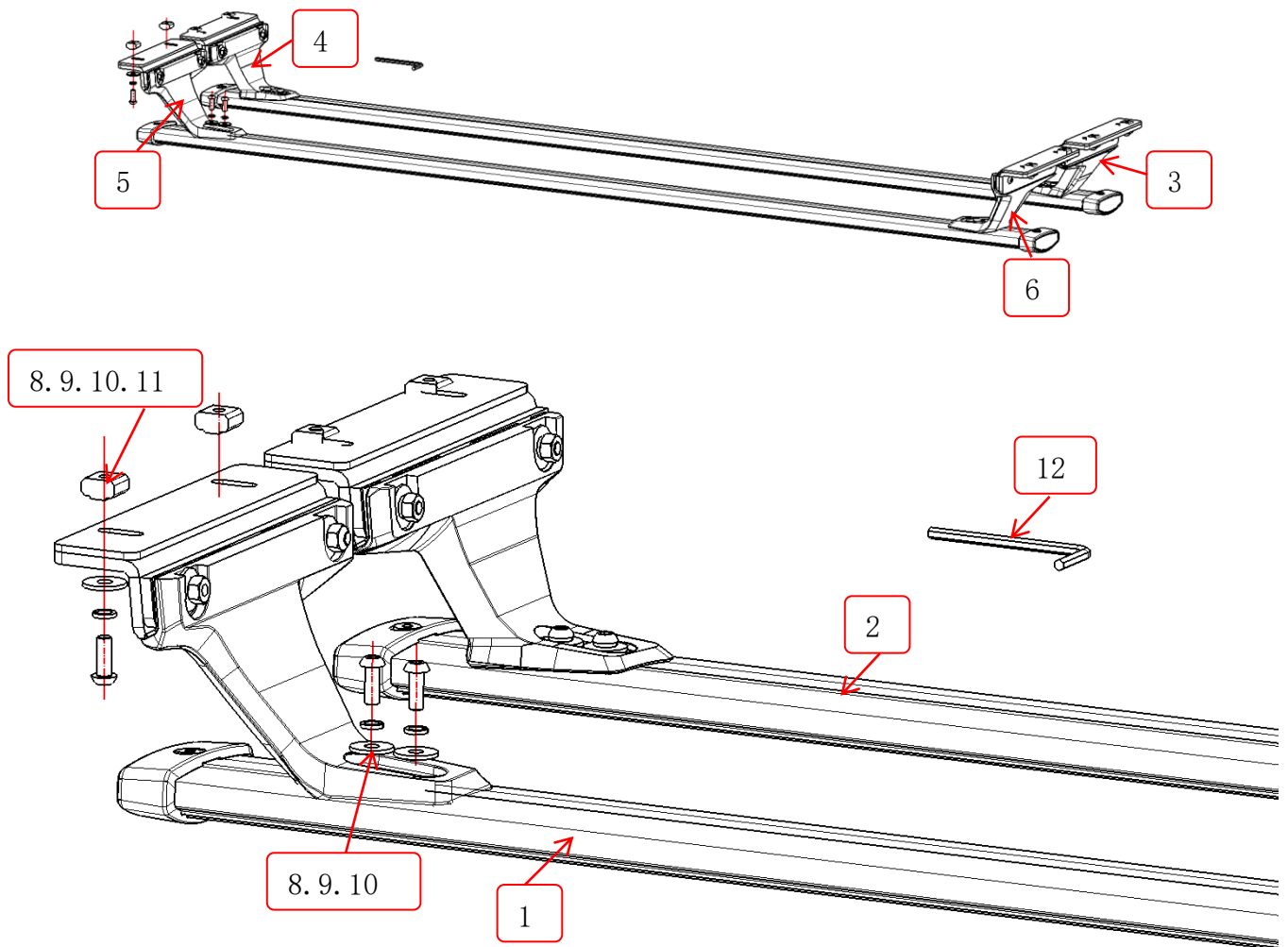


Diagram of Product Label Location

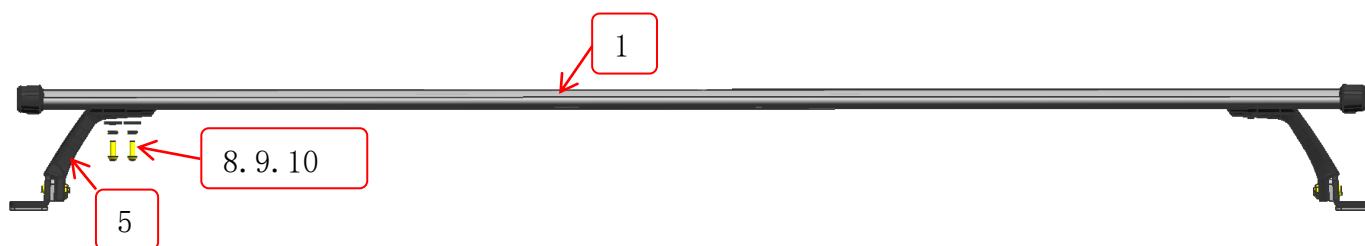
Aluminum Rod



Installation steps

Step 1: Open the carton, find the installation manual, and unpack the standard parts package

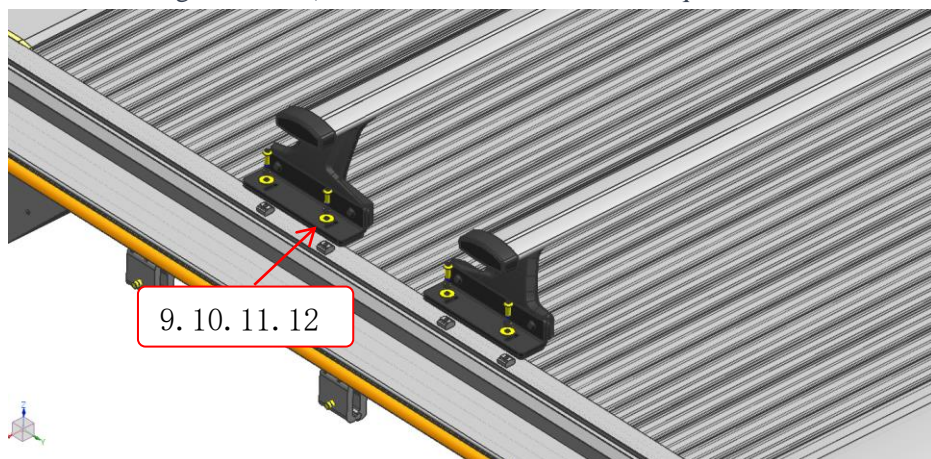
Step 2: Find the luggage rack aluminum rod that corresponds to the bracket (left/right). Then align the bracket with the aluminum rod, screw on the standard parts, as shown in the figure below (Note: the numbers follow the sequence number of the basic parts, and the rubber strip has been installed in advance).



3D Installation Method Diagram

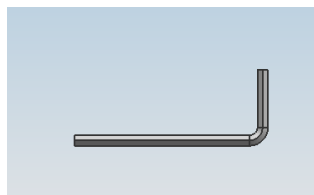
Note: Do not tighten the bolts first. Tighten them after confirming the size of the installed rack.

Step 3: Slide the block nuts into the groove of the aluminum profile (front/rear luggage rack are the same). Place the luggage rack on the roller shutter rail, align it with the block nut, and fix the plastic end (left/right) with standard parts, as shown in the figure below (Note: the numbers follow the sequence number of the basic parts).



Step 4: After installing the bracket and luggage rack, align them with the installation position and fix them.

Note: The bolts used for this product should be tightened with the wrench shown in the figure below.



Disclaimer: Caused due to improper installation initiates or some related problem and losses, are beyond our company's quality assurance.